



# TOURIST ACCOMMODATION AUSTRALIA

EMBARGO: 11:30AM (CANBERRA TIME) WED 27 MAR 2002

## DECEMBER QTR KEY FIGURES

LICENSED HOTELS	Dec Qtr 2000	Dec Qtr 2001	change
Rooms available (no.)	76 783	78 574	2.3 %
Room nights occupied (no.)	4 606.7	4 437.3	-3.7 %
Room occupancy rate (%)	65.3	61.5	-3.8 pts
Takings from accommodation (\$'000)	677 488	611 507	-9.7 %
Takings per room night occupied (\$)	147.1	137.8	-9.3 \$

### MOTELS AND GUEST HOUSES

Rooms available (no.)	84 722	84 430	-0.3 %
Room nights occupied (no.)	4083.0	4 055.1	-0.7 %
Room occupancy rate (%)	52.4	52.2	-0.2 pts
Takings from accommodation (\$'000)	363 272	355 294	-2.2 %
Takings per room night occupied (\$)	89.0	87.6	-1.4 \$

### SERVICED APARTMENTS

Rooms available (no.)	33 421	35 129	5.1 %
Room nights occupied (no.)	1 853.2	2 003.4	8.1 %
Room occupancy rate (%)	60.3	62.0	1.7 pts
Takings from accommodation (\$'000)	226 330	242 753	7.3 %
Takings per room night occupied (\$)	122.1	121.2	-0.9 \$

## DECEMBER QTR KEY POINTS

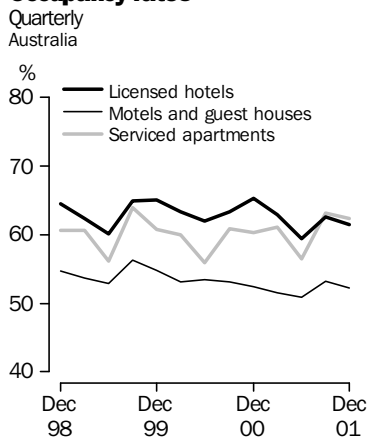
### DECREASES IN OCCUPANCY

- In the December quarter 2001 room nights occupied in hotels, motels, guest houses and serviced apartments fell by 0.4% compared to the December quarter 2000. Decreases were recorded in WA (4.8%), NT (2.6%), and NSW (2.5%).
- Room nights in hotels, motels and serviced apartments for the month of November 2001 fell 3.6% nationally compared to November 2000. Falls in room nights in hotels contributed significantly, falling 10.5% in NSW, 10.4% in WA and 8.7% in Qld. SA and Victoria were the only two States to record increased hotel occupancy: up 3.0% and 2.7%, respectively.
- In contrast to the falls in room nights occupied in hotels, motels and guest houses, room nights in serviced apartments increased 8.1% in the December quarter 2001 compared to the December quarter 2000. Only the NT showed a decrease for the serviced apartments sector.

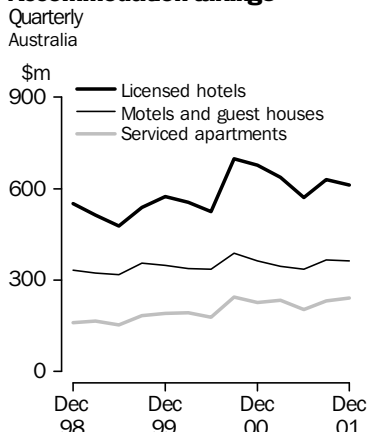
### TAKINGS DOWN RELATIVE TO DECEMBER QUARTER 2000

- In the December quarter 2001, takings in hotels, motels, guest houses and serviced apartments fell 4.5% compared to the corresponding quarter in 2000. NSW and WA had the largest decreases: 12.2% and 6.6% respectively.
- Hotel takings fell 19.0% in NSW, 10.0% in WA and 9.5% in the ACT. Only SA and Vic. recorded increased takings from hotels: 1.9% and 0.9% respectively. Takings in serviced apartments increased by 7.3%, with SA and Qld having the largest increases, up 13.6% and 12.1% respectively.

### Occupancy rates



### Accommodation takings



- For further information about these and related statistics, contact Neil McKellar-Stewart on 07 3222 6364, or the National Information Service on 1300 135 070.

## NOTES

### FORTHCOMING ISSUES

<i>ISSUE</i>	<i>RELEASE DATE</i>
March Quarter 2002	21 June 2002
June Quarter 2002	20 September 2002

### INTRODUCTION

This publication contains the results of the quarterly Survey of Tourist Accommodation (STA). The STA includes hotels, motels, guest houses and serviced apartments with 15 or more rooms.

### SYMBOLS AND OTHER

#### USAGES

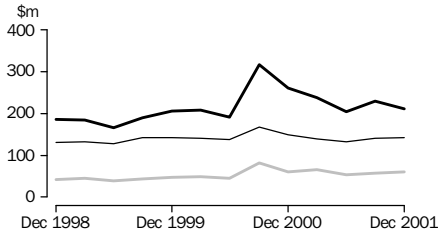
n.a.	not available
n.p.	not available for publication but included in totals where applicable
r	revised
..	not applicable
—	nil or rounded to zero

Dennis Trewin  
Australian Statistician

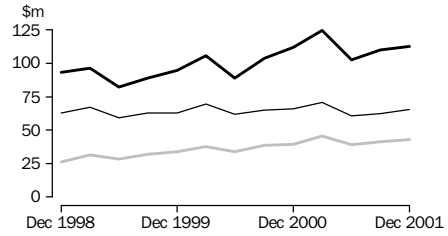
# ACCOMMODATION TAKINGS

Licensed hotels
  Motels and guest houses
  Serviced apartments

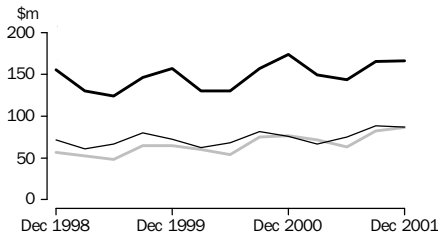
NEW SOUTH WALES



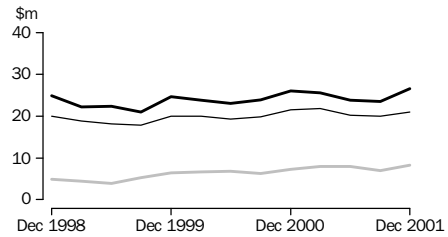
VICTORIA



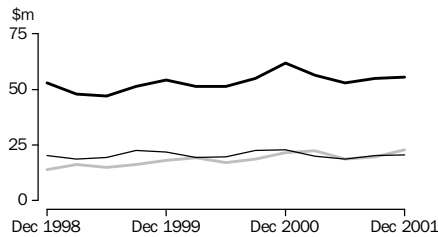
QUEENSLAND



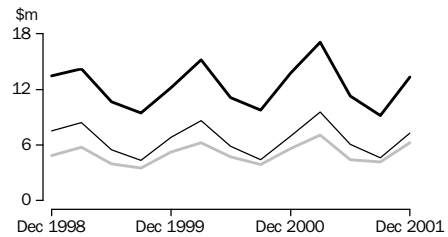
SOUTH AUSTRALIA



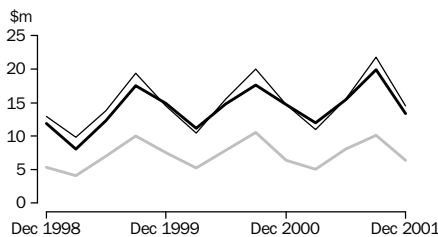
WESTERN AUSTRALIA



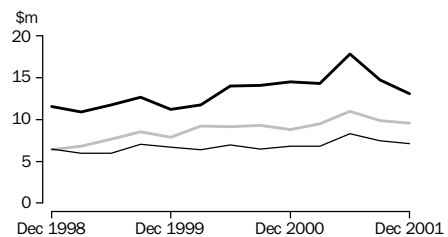
TASMANIA



NORTHERN TERRITORY



AUSTRALIAN CAPITAL TERRITORY



## LIST OF TABLES

Page

1	Summary of hotels, motels, guest houses and serviced apartments	5
	Hotels, motels, guest houses and serviced apartments, by star grading	
2	Australia	6
3	New South Wales	8
4	Victoria	10
5	Queensland	12
6	South Australia	14
7	Western Australia	16
8	Tasmania	18
9	Northern Territory	20
10	Australian Capital Territory	22
	Hotels, motels, guest houses and serviced apartments, by Tourism Region	
11	New South Wales	24
12	Victoria	26
13	Queensland	28
14	South Australia	30
15	Western Australia	31
16	Tasmania	32
17	Northern Territory and Australian Capital Territory	33

# 1

## SUMMARY OF HOTELS, MOTELS, GUEST HOUSES AND SERVICED APARTMENTS (a)—Australia

<i>Period</i>	<i>Establish- ments</i> no.	<i>Guest rooms</i> no.	<i>Bed spaces</i> no.	<i>Persons employed</i> no.	<i>Room nights occupied</i> '000	<i>Room occupancy rate</i> %	<i>Guest nights</i> '000	<i>Bed occupancy rate</i> %	<i>Guest arrivals</i> '000	<i>Average length of stay</i> days	<i>Takings from accom- modation</i> \$'000
<b>LICENSED HOTELS WITH FACILITIES</b>											
<b>2000</b>											
September quarter	774	76 607	203 977	73 695	4 447	63.3	7 261	38.8	2 955	2.5	698 985
December quarter	780	76 783	204 109	73 457	4 607	65.3	7 569	40.3	3 109	2.4	677 488
<b>2001</b>											
March quarter	781	77 626	205 020	72 670	4 387	62.9	7 294	39.6	3 034	2.4	636 858
June quarter	778	78 050	205 656	72 226	4 212	59.3	6 854	36.6	2 984	2.3	569 936
September quarter	776	78 241	205 546	71 620	4 506	62.6	7 509	39.7	3 175	2.4	628 608
December quarter	781	78 574	206 592	70 663	4 437	61.5	7 426	39.1	3 139	2.4	611 507
Year ended December 2000	..	..	..	..	17 469	63.5	28 448	38.8	11 999	2.4	2 459 093
Year ended December 2001	..	..	..	..	17 543	61.6	29 082	38.8	12 333	2.4	2 446 909
<b>MOTELS AND GUEST HOUSES WITH FACILITIES</b>											
<b>2000</b>											
September quarter	2 412	85 078	251 929	31 342	4 142	53.1	7 286	31.5	3 980	1.8	387 739
December quarter	2 402	84 722	250 170	30 328	4 083	52.4	7 167	31.2	3 955	1.8	363 272
<b>2001</b>											
March quarter	2 400	84 432	248 795	29 917	3 907	51.5	6 982	31.2	3 856	1.8	345 954
June quarter	2 398	84 093	247 928	29 368	3 894	50.9	6 746	29.9	3 788	1.8	336 607
September quarter	2 394	84 021	246 834	29 740	4 113	53.2	7 313	32.2	4 076	1.8	365 585
December quarter	2 400	84 430	247 776	29 288	4 055	52.2	7 187	31.6	4 079	1.8	355 294
Year ended December 2000	..	..	..	..	16 539	53.0	28 962	31.4	15 859	1.8	1 424 522
Year ended December 2001	..	..	..	..	15 969	52.0	28 227	31.2	15 799	1.8	1 403 441
<b>SERVICED APARTMENTS</b>											
<b>2000</b>											
September quarter	641	33 394	113 130	11 466	1 860	60.9	4 041	39.0	1 044	3.9	243 388
December quarter	646	33 421	113 267	11 612	1 853	60.3	4 040	38.8	1 143	3.5	226 330
<b>2001</b>											
March quarter	649	34 501	115 146	11 872	1 894	61.1	4 183	40.4	1 142	3.7	235 295
June quarter	649	34 401	114 636	11 532	1 767	56.4	3 752	36.0	1 071	3.5	204 794
September quarter	646	34 467	114 391	11 459	2 000	63.1	4 361	41.4	1 175	3.7	232 329
December quarter	657	35 129	117 192	11 799	2 003	62.0	4 498	41.7	1 225	3.7	242 753
Year ended December 2000	..	..	..	..	7 072	59.3	15 360	37.8	4 105	3.7	841 384
Year ended December 2001	..	..	..	..	7 665	60.7	16 793	39.9	4 613	3.6	915 171
<b>TOTAL ESTABLISHMENTS</b>											
<b>2000</b>											
September quarter	3 827	195 079	569 036	116 503	10 449	58.4	18 589	35.6	7 979	2.3	1 330 113
December quarter	3 828	194 926	567 546	115 397	10 543	58.8	18 775	36.0	8 207	2.3	1 267 090
<b>2001</b>											
March quarter	3 830	196 559	568 961	114 459	10 189	57.7	18 459	36.1	8 031	2.3	1 218 107
June quarter	3 825	196 544	568 220	113 126	9 873	55.2	17 352	33.6	7 843	2.2	1 111 337
September quarter	3 816	196 729	566 771	112 819	10 619	58.7	19 182	36.8	8 427	2.3	1 226 522
December quarter	3 838	198 133	571 560	111 750	10 496	57.6	19 111	36.4	8 444	2.3	1 209 554
Year ended December 2000	..	..	..	..	41 080	58.1	72 771	35.3	31 963	2.3	4 724 998
Year ended December 2001	..	..	..	..	41 176	57.3	74 103	35.7	32 745	2.3	4 765 521

(a) Comprising establishments with 15 or more rooms or units. See Explanatory Notes, paragraph 7.

# 2

## HOTELS, MOTELS, GUEST HOUSES AND SERVICED APARTMENTS (a)—Australia

### STAR GRADING .....

Period	Licensed hotels with facilities	Motels and guest houses	Serviced apartments	1	2	3	4	5	Ungraded	Total
<b>ESTABLISHMENTS, CAPACITY AND EMPLOYMENT (number)</b>										
<b>December quarter 2000</b>										
Establishments	780	2 402	646	63	463	1 863	887	94	458	3 828
Guest rooms	76 783	84 722	33 421	2 028	13 425	70 881	69 610	22 619	16 363	194 926
Bed spaces	204 109	250 170	113 267	6 503	39 590	210 833	204 787	58 959	46 874	567 546
Persons employed	73 457	30 328	11 612	749	5 349	27 499	39 790	35 659	6 351	115 397
<b>December quarter 2001</b>										
Establishments	781	2 400	657	66	458	1 868	936	103	407	3 838
Guest rooms	78 574	84 430	35 129	2 299	13 513	71 203	72 889	24 125	14 104	198 133
Bed spaces	206 592	247 776	117 192	7 246	39 864	210 723	210 644	61 525	41 558	571 560
Persons employed	70 663	29 288	11 799	778	5 414	26 696	38 396	34 665	5 801	111 750
<b>ROOM NIGHTS OCCUPIED ('000)</b>										
<b>2000</b>										
December quarter	4 606.7	4 083.0	1 853.2	64.0	534.1	3 556.6	4 230.5	1 513.3	644.4	10 543.0
<b>2001</b>										
October	1 518.9	1 483.1	699.3	26.4	196.6	1 281.3	1 495.1	493.6	208.3	3 701.3
November	1 521.5	1 362.9	661.2	25.7	176.0	1 178.6	1 460.5	510.2	194.6	3 545.6
December	1 397.0	1 209.0	642.9	24.5	162.7	1 069.5	1 329.8	477.8	184.7	3 249.0
December quarter	4 437.3	4 055.1	2 003.4	76.5	535.4	3 529.4	4 285.3	1 481.7	587.5	10 495.8
<b>ROOM OCCUPANCY RATES (%)</b>										
<b>2000</b>										
December quarter	65.3	52.4	60.3	34.3	43.3	54.6	66.1	72.7	43.0	58.8
<b>2001</b>										
October	62.4	56.7	64.2	37.0	46.9	58.1	66.2	66.0	47.7	60.3
November	64.6	53.8	62.7	37.2	43.4	55.2	66.8	70.5	46.1	59.7
December	57.5	46.3	59.1	34.3	38.8	48.5	59.0	63.9	42.7	53.0
December quarter	61.5	52.2	62.0	36.2	43.1	53.9	64.0	66.8	45.5	57.6
<b>GUEST NIGHTS ('000)</b>										
<b>2000</b>										
December quarter	7 569.1	7 166.6	4 039.7	101.2	958.8	6 557.2	7 489.8	2 498.0	1 170.3	18 775.4
<b>2001</b>										
October	2 493.1	2 616.1	1 540.4	41.4	358.1	2 365.5	2 682.6	813.5	388.6	6 649.6
November	2 442.7	2 317.0	1 394.3	39.2	307.3	2 098.2	2 533.0	823.2	353.1	6 154.0
December	2 489.8	2 253.8	1 563.4	38.7	310.7	2 109.5	2 599.1	875.7	373.4	6 307.0
December quarter	7 425.6	7 186.9	4 498.2	119.3	976.1	6 573.1	7 814.7	2 512.3	1 115.1	19 110.6
<b>BED OCCUPANCY RATES (%)</b>										
<b>2000</b>										
December quarter	40.3	31.2	38.8	16.9	26.4	33.8	39.8	46.1	27.2	36.0
<b>2001</b>										
October	38.9	34.1	42.4	18.4	29.0	36.2	41.1	42.7	30.2	37.5
November	39.4	31.2	39.7	18.0	25.7	33.2	40.1	44.6	28.4	35.9
December	39.0	29.4	43.1	17.2	25.1	32.3	40.0	45.9	29.4	35.7
December quarter	39.1	31.6	41.7	17.9	26.6	33.9	40.4	44.4	29.3	36.4

(a) Comprising establishments with 15 or more rooms or units. See Explanatory Notes, paragraph 7.

## STAR GRADING .....

Period	Licensed hotels with facilities	Motels and guest houses	Serviced apartments	1	2	3	4	5	Ungraded	Total
GUEST ARRIVALS ('000)										
<b>2000</b>										
December quarter	3 108.9	3 955.1	1 142.8	56.8	548.9	3 255.9	2 970.2	914.1	460.9	8 206.8
<b>2001</b>										
October	1 052.8	1 476.5	417.2	24.3	200.2	1 203.3	1 059.6	307.9	151.2	2 946.5
November	1 053.0	1 316.3	399.3	24.2	172.6	1 073.6	1 031.4	325.1	141.7	2 768.6
December	1 033.7	1 286.3	408.8	22.9	172.8	1 063.9	998.7	332.9	137.6	2 728.8
December quarter	3 139.4	4 079.1	1 225.3	71.4	545.7	3 340.8	3 089.6	965.9	430.4	8 443.8
AVERAGE LENGTH OF STAY (days)										
<b>2000</b>										
December quarter	2.4	1.8	3.5	1.8	1.7	2.0	2.5	2.7	2.5	2.3
<b>2001</b>										
December quarter	2.4	1.8	3.7	1.7	1.8	2.0	2.5	2.6	2.6	2.3
TAKINGS FROM ACCOMMODATION (\$'000)										
<b>2000</b>										
December quarter	677 488	363 272	226 330	3 926	34 673	318 060	544 852	304 024	61 554	1 267 090
<b>2001</b>										
October	208 378	129 734	83 729	1 580	12 908	112 395	184 096	92 125	18 738	421 842
November	209 324	118 205	77 745	1 535	11 392	102 104	178 230	94 613	17 401	405 274
December	193 805	107 355	81 278	1 498	11 058	96 166	164 762	91 331	17 623	382 438
December quarter	611 507	355 294	242 753	4 613	35 358	310 665	527 088	278 068	53 762	1 209 554
AVERAGE TAKINGS PER ROOM NIGHT OCCUPIED (\$)										
<b>2000</b>										
December quarter	147.1	89.0	122.1	61.3	64.9	89.4	128.8	200.9	95.5	120.2
<b>2001</b>										
October	137.2	87.5	119.7	59.9	65.6	87.7	123.1	186.6	90.0	114.0
November	137.6	86.7	117.6	59.8	64.7	86.6	122.0	185.4	89.4	114.3
December	138.7	88.8	126.4	61.2	68.0	89.9	123.9	191.1	95.4	117.7
December quarter	137.8	87.6	121.2	60.3	66.0	88.0	123.0	187.7	91.5	115.2
AVERAGE TAKINGS PER AVAILABLE ROOM NIGHT (\$)										
<b>2000</b>										
December quarter	96.0	46.7	73.6	21.0	28.1	48.8	85.1	146.1	41.0	70.7
<b>2001</b>										
October	85.6	49.6	76.9	22.2	30.8	50.9	81.5	123.2	42.9	68.7
November	88.8	46.7	73.8	22.3	28.1	47.8	81.5	130.7	41.2	68.2
December	79.8	41.1	74.7	21.0	26.4	43.6	73.1	122.1	40.8	62.4
December quarter	84.7	45.8	75.1	21.8	28.4	47.4	78.7	125.3	41.6	66.4

(a) Comprising establishments with 15 or more rooms or units. See Explanatory Notes, paragraph 7.

## STAR GRADING .....

Period	Licensed	Motels	Serviced	STAR GRADING					Ungraded	Total
	hotels with facilities	and guest houses	apartments	1	2	3	4	5		
<b>ESTABLISHMENTS, CAPACITY AND EMPLOYMENT (number)</b>										
<b>December quarter 2000</b>										
Establishments	194	994	136	31	178	702	220	24	169	1 324
Guest rooms	24 355	33 107	7 366	1 199	5 119	25 465	20 724	6 373	5 948	64 828
Bed spaces	60 621	98 650	24 932	4 292	15 193	74 764	57 809	14 677	17 468	184 203
Persons employed	21 150	11 781	2 791	269	1 748	9 422	12 730	9 767	1 786	35 722
<b>December quarter 2001</b>										
Establishments	201	990	135	33	180	703	230	26	154	1 326
Guest rooms	25 001	32 929	7 509	1 267	5 260	25 737	21 374	6 893	4 908	65 439
Bed spaces	61 687	96 837	24 332	4 489	15 385	74 511	58 275	15 336	14 860	182 856
Persons employed	19 860	11 483	2 706	318	1 925	8 890	11 766	9 543	1 607	34 049
<b>ROOM NIGHTS OCCUPIED ('000)</b>										
<b>2000</b>										
December quarter	1 511.4	1 593.2	393.4	34.9	228.4	1 315.7	1 308.0	418.0	193.1	3 498.0
<b>2001</b>										
October	468.3	579.3	139.9	13.1	83.2	468.6	432.3	129.5	60.7	1 187.5
November	480.9	518.1	137.2	12.8	72.8	423.1	431.6	138.9	56.9	1 136.2
December	464.8	479.7	142.4	12.7	67.3	399.9	414.0	138.3	54.7	1 086.9
December quarter	1 414.0	1 577.0	419.5	38.6	223.3	1 291.6	1 277.9	406.8	172.4	3 410.6
<b>ROOM OCCUPANCY RATES (%)</b>										
<b>2000</b>										
December quarter	67.5	52.4	58.0	31.6	48.5	56.2	68.6	71.3	35.3	58.7
<b>2001</b>										
October	60.4	56.7	60.1	33.4	51.0	58.7	65.2	60.6	39.9	58.5
November	64.1	52.4	60.9	33.7	46.1	54.8	67.3	67.2	38.7	57.9
December	60.5	47.2	61.3	32.4	41.3	50.1	63.1	64.7	37.0	53.9
December quarter	61.7	52.1	60.8	33.1	46.1	54.6	65.2	64.1	38.5	56.8
<b>GUEST NIGHTS ('000)</b>										
<b>2000</b>										
December quarter	2 378.1	2 833.8	777.6	52.7	417.4	2 378.1	2 157.0	652.6	331.5	5 989.4
<b>2001</b>										
October	741.2	1 046.3	282.9	21.3	152.7	866.3	721.3	202.8	106.0	2 070.4
November	759.5	880.9	264.7	20.7	127.1	740.8	702.4	218.9	95.2	1 905.1
December	792.2	901.7	323.1	21.1	128.1	775.8	747.2	246.3	98.5	2 017.0
December quarter	2 292.9	2 829.0	870.6	63.1	407.9	2 382.9	2 170.9	668.0	299.6	5 992.5
<b>BED OCCUPANCY RATES (%)</b>										
<b>2000</b>										
December quarter	42.6	31.3	33.9	13.3	29.9	34.6	40.6	48.3	20.6	35.4
<b>2001</b>										
October	38.8	34.9	37.5	15.3	32.0	37.5	39.9	42.7	23.0	36.5
November	41.0	30.3	36.3	15.4	27.5	33.1	40.2	47.6	21.4	34.7
December	41.9	30.2	43.0	15.2	26.9	33.6	41.9	51.8	22.1	35.8
December quarter	40.6	31.8	38.9	15.3	28.8	34.8	40.7	47.3	22.2	35.7

(a) Comprising establishments with 15 or more rooms or units. See Explanatory Notes, paragraph 7.



## 3

HOTELS, MOTELS, GUEST HOUSES AND SERVICED APARTMENTS (a)—NSW *continued*

## STAR GRADING .....

Period	Licensed hotels with facilities	Motels and guest houses	Serviced apartments	1	2	3	4	5	Ungraded	Total
GUEST ARRIVALS ('000)										
<b>2000</b>										
December quarter	916.6	1 669.0	246.3	29.8	247.3	1 262.3	891.5	241.4	159.7	2 831.9
<b>2001</b>										
October	307.8	634.5	87.4	12.8	92.4	478.3	316.5	80.0	49.7	1 029.7
November	321.5	545.1	85.3	13.5	76.7	410.8	310.1	92.6	48.3	951.9
December	327.7	553.5	87.8	12.5	76.0	428.3	309.6	99.5	43.1	968.9
December quarter	957.0	1 733.1	260.5	38.7	245.1	1 317.3	936.3	272.1	141.1	2 950.6
AVERAGE LENGTH OF STAY (days)										
<b>2000</b>										
December quarter	2.6	1.7	3.2	1.8	1.7	1.9	2.4	2.7	2.1	2.1
<b>2001</b>										
December quarter	2.4	1.6	3.3	1.6	1.7	1.8	2.3	2.5	2.1	2.0
TAKINGS FROM ACCOMMODATION (\$'000)										
<b>2000</b>										
December quarter	261 047	148 898	60 071	2 365	15 255	126 401	197 120	110 348	18 528	470 017
<b>2001</b>										
October	69 330	51 534	19 679	819	5 411	41 727	59 286	28 034	5 266	140 543
November	71 555	45 441	18 984	791	4 689	37 231	58 321	30 052	4 895	135 980
December	70 481	44 258	21 589	827	4 585	37 028	57 508	31 296	5 084	136 327
December quarter	211 366	141 233	60 252	2 437	14 685	115 986	175 114	89 382	15 246	412 850
AVERAGE TAKINGS PER ROOM NIGHT OCCUPIED (\$)										
<b>2000</b>										
December quarter	172.7	93.5	152.7	67.8	66.8	96.1	150.7	264.0	95.9	134.4
<b>2001</b>										
October	148.1	89.0	140.6	62.4	65.0	89.0	137.1	216.5	86.7	118.4
November	148.8	87.7	138.4	61.8	64.4	88.0	135.1	216.3	86.0	119.7
December	151.6	92.3	151.6	65.1	68.1	92.6	138.9	226.2	92.9	125.4
December quarter	149.5	89.6	143.6	63.1	65.8	89.8	137.0	219.7	88.4	121.1
AVERAGE TAKINGS PER AVAILABLE ROOM NIGHT (\$)										
<b>2000</b>										
December quarter	116.5	48.9	88.6	21.4	32.4	54.0	103.4	188.2	33.9	78.9
<b>2001</b>										
October	89.5	50.5	84.5	20.9	33.2	52.3	89.5	131.2	34.6	69.3
November	95.4	46.0	84.3	20.8	29.7	48.2	91.0	145.3	33.2	69.3
December	91.7	43.5	92.9	21.1	28.1	46.4	87.7	146.5	34.4	67.6
December quarter	92.2	46.7	87.3	20.9	30.3	49.0	89.3	140.9	34.1	68.7

(a) Comprising establishments with 15 or more rooms or units. See Explanatory Notes, paragraph 7.

## 4

## HOTELS, MOTELS, GUEST HOUSES AND SERVICED APARTMENTS (a)—Vic.

## STAR GRADING .....

Period	Licensed hotels with facilities	Motels and guest houses	Serviced apartments	1	2	3	4	5	Ungraded	Total
<b>ESTABLISHMENTS, CAPACITY AND EMPLOYMENT (number)</b>										
<b>December quarter 2000</b>										
Establishments	126	498	77	8	70	368	193	16	46	701
Guest rooms	11 433	15 589	4 133	259	1 806	11 486	12 332	3 576	1 696	31 155
Bed spaces	27 397	45 294	12 547	742	5 471	32 800	33 100	7 963	5 162	85 238
Persons employed	14 314	5 776	1 610	81	766	4 207	6 904	8 907	835	21 700
<b>December quarter 2001</b>										
Establishments	130	497	84	8	67	372	203	20	41	711
Guest rooms	12 424	15 445	4 679	314	1 728	11 722	12 975	4 188	1 621	32 548
Bed spaces	29 393	44 818	14 393	908	5 329	33 424	34 794	9 268	4 881	88 604
Persons employed	14 189	5 386	1 758	85	726	4 225	6 372	9 060	865	21 333
<b>ROOM NIGHTS OCCUPIED ('000)</b>										
<b>2000</b>										
December quarter	721.9	709.9	267.0	11.3	55.9	541.1	762.3	246.0	82.3	1 698.9
<b>2001</b>										
October	253.1	251.7	102.9	5.1	18.1	196.3	270.5	90.7	27.0	607.7
November	275.4	249.0	106.8	5.3	18.5	195.3	280.3	104.4	27.4	631.2
December	218.2	209.4	90.8	4.9	17.2	166.8	227.8	79.8	21.8	518.4
December quarter	746.7	710.2	300.4	15.3	53.8	558.5	778.7	274.8	76.3	1 757.3
<b>ROOM OCCUPANCY RATES (%)</b>										
<b>2000</b>										
December quarter	68.8	49.6	70.2	47.6	34.1	51.2	67.2	74.8	53.8	59.4
<b>2001</b>										
October	65.8	52.7	70.9	52.0	33.8	54.1	67.3	69.8	54.6	60.3
November	74.0	53.7	76.1	55.9	35.7	55.5	72.0	83.1	57.3	64.7
December	56.8	43.7	62.6	50.7	32.1	45.9	56.6	61.4	44.1	51.4
December quarter	65.5	50.0	69.8	52.8	33.8	51.8	65.2	71.3	51.9	58.7
<b>GUEST NIGHTS ('000)</b>										
<b>2000</b>										
December quarter	1 107.3	1 233.6	497.9	19.1	102.9	980.7	1 236.9	357.5	141.6	2 838.7
<b>2001</b>										
October	388.7	433.7	193.0	6.6	33.4	344.4	451.1	133.1	46.7	1 015.4
November	417.9	425.8	202.5	6.7	32.5	342.3	466.5	149.5	48.7	1 046.2
December	357.5	380.6	190.3	6.2	32.0	311.2	409.0	126.7	43.3	928.4
December quarter	1 164.2	1 240.1	585.8	19.5	98.0	998.0	1 326.7	409.3	138.6	2 990.0
<b>BED OCCUPANCY RATES (%)</b>										
<b>2000</b>										
December quarter	44.1	29.7	43.1	28.0	20.9	32.5	40.6	48.8	30.5	36.3
<b>2001</b>										
October	42.8	31.3	43.3	23.4	20.2	33.3	41.8	46.3	31.4	37.0
November	47.5	31.7	46.9	24.6	20.4	34.1	44.7	53.8	33.8	39.4
December	39.3	27.4	42.7	21.9	19.4	30.0	37.9	44.1	29.1	33.8
December quarter	43.2	30.1	44.2	23.3	20.0	32.5	41.4	48.0	31.4	36.7

(a) Comprising establishments with 15 or more rooms or units. See Explanatory Notes, paragraph 7.

# 4

## HOTELS, MOTELS, GUEST HOUSES AND SERVICED APARTMENTS (a)—Vic. *continued*

### STAR GRADING .....

Period	Licensed hotels with facilities	Motels and guest houses	Serviced apartments	1	2	3	4	5	Ungraded	Total
GUEST ARRIVALS ('000)										
<b>2000</b>										
December quarter	521.7	714.2	155.0	11.6	62.0	506.9	605.0	152.5	52.9	1 390.8
<b>2001</b>										
October	176.8	251.5	57.3	4.5	19.3	180.6	208.0	56.3	17.0	485.7
November	183.4	246.7	61.2	4.8	19.4	177.9	212.4	60.0	16.7	491.2
December	162.4	223.8	56.2	4.5	18.6	161.9	187.7	54.3	15.4	442.4
December quarter	522.6	722.0	174.7	13.9	57.2	520.4	608.1	170.6	49.1	1 419.3
AVERAGE LENGTH OF STAY (days)										
<b>2000</b>										
December quarter	2.1	1.7	3.2	1.7	1.7	1.9	2.0	2.3	2.7	2.0
<b>2001</b>										
December quarter	2.2	1.7	3.4	1.4	1.7	1.9	2.2	2.4	2.8	2.1
TAKINGS FROM ACCOMMODATION (\$'000)										
<b>2000</b>										
December quarter	111 763	65 804	39 696	623	3 566	46 076	100 840	54 343	11 815	217 263
<b>2001</b>										
October	37 923	23 021	14 493	312	1 144	17 047	34 846	18 464	3 624	75 436
November	43 384	23 017	15 700	316	1 214	17 368	36 974	22 318	3 911	82 101
December	31 459	19 332	12 648	279	1 146	14 734	28 476	15 766	3 038	63 439
December quarter	112 766	65 370	42 841	907	3 503	49 149	100 296	56 549	10 573	220 977
AVERAGE TAKINGS PER ROOM NIGHT OCCUPIED (\$)										
<b>2000</b>										
December quarter	154.8	92.7	148.7	55.0	63.8	85.2	132.3	220.9	143.6	127.9
<b>2001</b>										
October	149.8	91.5	140.8	61.6	63.2	86.8	128.8	203.6	134.1	124.1
November	157.5	92.4	147.1	60.1	65.6	88.9	131.9	213.8	142.6	130.1
December	144.2	92.3	139.3	56.6	66.6	88.3	125.0	197.7	139.3	122.4
December quarter	151.0	92.1	142.6	59.4	65.1	88.0	128.8	205.8	138.6	125.8
AVERAGE TAKINGS PER AVAILABLE ROOM NIGHT (\$)										
<b>2000</b>										
December quarter	106.5	46.0	104.4	26.1	21.8	43.6	88.9	165.2	77.2	75.9
<b>2001</b>										
October	98.7	48.2	99.9	32.0	21.3	47.0	86.6	142.2	73.2	74.9
November	116.6	49.7	111.8	33.6	23.4	49.4	95.0	177.6	81.7	84.1
December	81.8	40.4	87.2	28.7	21.4	40.5	70.8	121.4	61.4	62.9
December quarter	98.9	46.0	99.5	31.4	22.0	45.6	84.0	146.8	72.0	73.9

(a) Comprising establishments with 15 or more rooms or units. See Explanatory Notes, paragraph 7.

## STAR GRADING .....

<i>Period</i>	<i>Licensed hotels with facilities</i>	<i>Motels and guest houses</i>	<i>Serviced apartments</i>	1	2	3	4	5	<i>Ungraded</i>	<i>Total</i>
<b>ESTABLISHMENTS, CAPACITY AND EMPLOYMENT (number)</b>										
<b>December quarter 2000</b>										
Establishments	172	515	273	9	99	417	293	31	111	960
Guest rooms	20 584	18 465	13 304	209	2 465	15 443	21 933	8 025	4 278	52 353
Bed spaces	63 190	54 864	46 025	558	7 495	49 380	69 242	24 926	12 478	164 079
Persons employed	21 131	6 403	4 125	105	1 160	5 971	10 892	11 868	1 663	31 659
<b>December quarter 2001</b>										
Establishments	169	520	280	10	98	419	315	36	91	969
Guest rooms	20 822	18 647	13 877	302	2 650	15 311	23 153	8 376	3 554	53 346
Bed spaces	63 660	54 930	47 924	834	8 209	48 798	72 072	25 639	10 962	166 514
Persons employed	20 196	6 300	4 148	113	1 116	5 732	10 695	11 560	1 428	30 644
<b>ROOM NIGHTS OCCUPIED ('000)</b>										
<b>2000</b>										
<i>December quarter</i>	1 258.8	935.5	725.3	7.4	98.6	796.4	1 278.6	533.2	205.4	2 919.7
<b>2001</b>										
October	407.3	350.0	281.7	4.0	40.9	289.5	470.7	169.4	64.4	1 039.0
November	398.0	320.5	255.2	3.9	37.3	262.3	441.9	168.8	59.5	973.7
December	388.7	286.5	257.8	4.0	36.6	240.3	421.5	169.3	61.3	932.9
<i>December quarter</i>	1 194.0	956.9	794.7	11.9	114.7	792.2	1 334.1	507.5	185.2	2 945.6
<b>ROOM OCCUPANCY RATES (%)</b>										
<b>2000</b>										
<i>December quarter</i>	66.5	55.1	59.3	38.7	43.5	56.1	63.4	72.2	52.2	60.6
<b>2001</b>										
October	63.1	60.5	65.5	42.5	49.7	61.0	65.6	65.2	58.5	62.8
November	63.7	57.3	61.3	43.4	46.9	57.1	63.6	67.2	55.8	60.8
December	60.2	49.6	59.9	42.9	44.5	50.6	58.8	65.2	55.6	56.4
<i>December quarter</i>	62.3	55.8	62.2	42.9	47.0	56.2	62.6	65.9	56.6	60.0
<b>GUEST NIGHTS ('000)</b>										
<b>2000</b>										
<i>December quarter</i>	2 373.5	1 642.9	1 796.9	13.1	178.0	1 584.0	2 622.8	996.8	418.5	5 813.3
<b>2001</b>										
October	768.9	613.4	704.0	7.1	76.1	567.4	979.2	316.7	139.6	2 086.2
November	720.8	546.5	613.2	6.6	67.3	496.2	879.5	306.0	125.0	1 880.6
December	803.1	545.6	703.9	6.8	73.8	523.7	955.8	347.8	144.7	2 052.6
<i>December quarter</i>	2 292.9	1 705.5	2 021.1	20.5	217.2	1 587.3	2 814.5	970.5	409.3	6 019.4
<b>BED OCCUPANCY RATES (%)</b>										
<b>2000</b>										
<i>December quarter</i>	40.8	32.5	42.4	25.6	25.8	34.9	41.2	43.5	36.5	38.5
<b>2001</b>										
October	39.0	36.0	47.4	27.6	29.9	37.5	43.8	39.8	41.1	40.4
November	37.7	33.2	42.7	26.4	27.3	33.9	40.7	39.8	38.0	37.6
December	40.7	32.1	47.4	26.4	29.0	34.6	42.8	43.8	42.6	39.8
<i>December quarter</i>	39.1	33.8	45.8	26.8	28.8	35.4	42.5	41.1	40.6	39.3

(a) Comprising establishments with 15 or more rooms or units. See Explanatory Notes, paragraph 7.

## 5

HOTELS, MOTELS, GUEST HOUSES AND SERVICED APARTMENTS (a)—Qld *continued*

## STAR GRADING .....

Period	Licensed hotels with facilities	Motels and guest houses	Serviced apartments	1	2	3	4	5	Ungraded	Total
GUEST ARRIVALS ('000)										
<b>2000</b>										
December quarter	818.9	791.6	420.1	5.3	100.4	648.6	827.5	321.6	127.2	2 030.6
<b>2001</b>										
October	272.9	300.0	162.3	2.7	37.5	237.8	305.5	109.1	42.7	735.2
November	267.7	266.3	149.6	2.6	33.0	212.3	287.1	109.6	39.1	683.6
December	274.6	272.6	159.4	2.8	34.8	214.0	296.9	115.5	42.5	706.6
December quarter	815.2	838.9	471.3	8.0	105.3	664.0	889.5	334.2	124.3	2 125.4
AVERAGE LENGTH OF STAY (days)										
<b>2000</b>										
December quarter	2.9	2.1	4.3	2.5	1.8	2.4	3.2	3.1	3.3	2.9
<b>2001</b>										
December quarter	2.8	2.0	4.3	2.6	2.1	2.4	3.2	2.9	3.3	2.8
TAKINGS FROM ACCOMMODATION (\$'000)										
<b>2000</b>										
December quarter	173 896	75 703	76 918	363	6 416	68 312	140 307	91 812	19 308	326 517
<b>2001</b>										
October	56 594	28 521	30 379	218	2 624	24 569	52 096	30 392	5 594	115 493
November	53 027	26 035	25 851	214	2 377	21 755	47 241	28 340	4 987	104 914
December	55 711	23 587	29 993	219	2 509	21 505	47 705	31 347	6 006	109 290
December quarter	165 332	78 143	86 223	651	7 510	67 829	147 042	90 079	16 586	329 697
AVERAGE TAKINGS PER ROOM NIGHT OCCUPIED (\$)										
<b>2000</b>										
December quarter	138.1	80.9	106.0	48.7	65.1	85.8	109.7	172.2	94.0	111.8
<b>2001</b>										
October	139.0	81.5	107.9	54.8	64.2	84.9	110.7	179.4	86.8	111.2
November	133.2	81.2	101.3	54.4	63.8	82.9	106.9	167.9	83.8	107.7
December	143.3	82.3	116.3	54.5	68.6	89.5	113.2	185.2	98.1	117.2
December quarter	138.5	81.7	108.5	54.6	65.5	85.6	110.2	177.5	89.6	111.9
AVERAGE TAKINGS PER AVAILABLE ROOM NIGHT (\$)										
<b>2000</b>										
December quarter	91.8	44.6	62.8	18.9	28.3	48.1	69.5	124.4	49.1	67.8
<b>2001</b>										
October	87.7	49.3	70.6	23.3	31.9	51.8	72.6	117.0	50.8	69.8
November	84.9	46.5	62.1	23.6	29.9	47.4	68.0	112.8	46.8	65.6
December	86.3	40.8	69.7	23.4	30.5	45.3	66.5	120.7	54.5	66.1
December quarter	86.3	45.6	67.5	23.4	30.8	48.2	69.0	116.9	50.7	67.2

(a) Comprising establishments with 15 or more rooms or units. See Explanatory Notes, paragraph 7.

## STAR GRADING .....

Period	Licensed	Motels	Serviced	STAR GRADING						Total
	hotels with facilities	and guest houses	apartments	1	2	3	4	5	Ungraded	
ESTABLISHMENTS, CAPACITY AND EMPLOYMENT (number)										
<b>December quarter 2000</b>										
Establishments	62	146	26	7	51	116	46	4	10	234
Guest rooms	4 128	5 204	1 220	158	1 491	4 478	2 877	1 263	285	10 552
Bed spaces	10 301	15 715	4 365	387	4 146	13 101	9 342	2 572	833	30 381
Persons employed	4 116	2 025	473	169	737	2 290	1 960	1 323	135	6 614
<b>December quarter 2001</b>										
Establishments	61	144	27	6	51	114	48	4	9	232
Guest rooms	4 083	5 170	1 283	138	1 498	4 381	3 031	1 263	225	10 536
Bed spaces	9 898	15 536	4 464	324	4 177	12 722	9 501	2 499	675	29 898
Persons employed	4 074	2 029	494	136	779	2 301	2 006	1 249	126	6 597
ROOM NIGHTS OCCUPIED ('000)										
<b>2000</b>										
December quarter	220.9	260.3	70.1	3.4	56.0	220.3	172.3	89.1	10.3	551.4
<b>2001</b>										
October	85.4	91.1	28.5	1.1	20.6	80.7	65.0	34.6	2.8	204.9
November	77.9	83.7	26.5	0.8	17.9	74.5	60.7	31.5	2.7	188.1
December	65.7	72.0	24.0	0.5	16.5	64.2	51.6	26.1	2.8	161.8
December quarter	229.0	246.8	79.0	2.4	55.0	219.5	177.3	92.2	8.4	554.8
ROOM OCCUPANCY RATES (%)										
<b>2000</b>										
December quarter	58.2	54.4	62.4	23.4	40.8	53.5	65.1	76.6	39.5	56.8
<b>2001</b>										
October	67.4	56.8	71.6	25.4	44.4	59.5	69.2	88.4	40.7	62.7
November	63.6	53.9	69.0	18.8	39.8	56.7	66.7	83.1	40.7	59.5
December	51.9	44.9	60.4	12.7	35.6	47.3	54.9	66.6	40.1	49.5
December quarter	61.0	51.9	67.0	18.9	39.9	54.5	63.6	79.3	40.5	57.2
GUEST NIGHTS ('000)										
<b>2000</b>										
December quarter	330.7	443.0	139.4	5.6	96.2	382.1	289.5	120.2	19.6	913.1
<b>2001</b>										
October	128.1	155.6	57.3	1.9	35.1	142.2	109.8	47.2	4.8	341.1
November	113.3	137.3	47.5	1.3	29.2	125.8	93.9	42.5	5.4	298.1
December	106.5	130.2	50.9	1.0	29.0	118.9	95.0	37.6	6.1	287.6
December quarter	348.0	423.1	155.7	4.3	93.3	386.9	298.7	127.3	16.3	926.7
BED OCCUPANCY RATES (%)										
<b>2000</b>										
December quarter	34.9	30.6	34.7	15.6	25.2	31.7	33.7	50.8	25.6	32.7
<b>2001</b>										
October	41.8	32.3	41.4	19.4	27.1	36.1	37.3	60.9	22.9	36.8
November	38.2	29.5	35.4	13.3	23.3	33.0	32.9	56.7	26.6	33.2
December	34.7	27.0	36.8	10.3	22.4	30.1	32.2	48.5	29.3	31.0
December quarter	38.2	29.6	37.9	14.3	24.3	33.1	34.2	55.4	26.3	33.7

(a) Comprising establishments with 15 or more rooms or units. See Explanatory Notes, paragraph 7.

## STAR GRADING .....

<i>Period</i>	<i>Licensed hotels with facilities</i>	<i>Motels and guest houses</i>	<i>Serviced apartments</i>	1	2	3	4	5	<i>Ungraded</i>	<i>Total</i>
GUEST ARRIVALS ('000)										
<b>2000</b>										
<i>December quarter</i>	176.3	256.1	48.0	3.7	59.2	213.3	133.4	62.2	8.6	480.4
<b>2001</b>										
October	64.0	89.8	16.7	1.4	20.2	80.3	45.2	21.5	1.8	170.5
November	59.1	80.9	16.2	0.9	17.8	70.5	42.9	21.7	2.3	156.2
December	54.2	77.0	15.3	0.8	17.8	67.0	38.2	19.8	2.8	146.5
<i>December quarter</i>	177.3	247.7	48.2	3.1	55.9	217.9	126.4	63.0	6.9	473.2
AVERAGE LENGTH OF STAY (days)										
<b>2000</b>										
<i>December quarter</i>	1.9	1.7	2.9	1.5	1.6	1.8	2.2	1.9	2.3	1.9
<b>2001</b>										
<i>December quarter</i>	2.0	1.7	3.2	1.4	1.7	1.8	2.4	2.0	2.4	2.0
TAKINGS FROM ACCOMMODATION (\$'000)										
<b>2000</b>										
<i>December quarter</i>	26 070	21 557	7 232	174	3 206	17 021	20 428	13 199	832	54 860
<b>2001</b>										
October	10 165	7 821	3 095	55	1 245	6 600	7 708	5 246	228	21 082
November	8 929	7 138	2 713	41	1 083	6 022	6 994	4 423	218	18 781
December	7 461	6 084	2 409	29	1 061	5 207	5 923	3 510	224	15 954
<i>December quarter</i>	26 556	21 044	8 217	125	3 389	17 829	20 625	13 179	670	55 817
AVERAGE TAKINGS PER ROOM NIGHT OCCUPIED (\$)										
<b>2000</b>										
<i>December quarter</i>	118.0	82.8	103.2	51.1	57.3	77.3	118.6	148.2	80.4	99.5
<b>2001</b>										
October	119.1	85.9	108.8	50.5	60.4	81.7	118.6	151.6	80.3	102.9
November	114.6	85.3	102.2	52.3	60.5	80.8	115.3	140.4	79.3	99.8
December	113.5	84.5	100.3	54.0	64.1	81.1	114.8	134.6	80.1	98.6
<i>December quarter</i>	116.0	85.3	104.0	51.9	61.6	81.2	116.4	143.0	79.9	100.6
AVERAGE TAKINGS PER AVAILABLE ROOM NIGHT (\$)										
<b>2000</b>										
<i>December quarter</i>	68.6	45.0	64.4	11.9	23.4	41.3	77.2	113.6	31.7	56.5
<b>2001</b>										
October	80.3	48.8	77.8	12.8	26.8	48.6	82.0	134.0	32.7	64.5
November	72.9	46.0	70.5	9.8	24.1	45.8	76.9	116.7	32.3	59.4
December	58.9	38.0	60.6	6.9	22.8	38.3	63.0	89.6	32.1	48.8
<i>December quarter</i>	70.7	44.2	69.6	9.8	24.6	44.2	74.0	113.4	32.4	57.6

(a) Comprising establishments with 15 or more rooms or units. See Explanatory Notes, paragraph 7.

## 7

## HOTELS, MOTELS, GUEST HOUSES AND SERVICED APARTMENTS (a)—WA

## STAR GRADING .....

<i>Period</i>	<i>Licensed hotels with facilities</i>	<i>Motels and guest houses</i>	<i>Serviced apartments</i>	<i>1 and Ungraded</i>	<i>2</i>	<i>3</i>	<i>4</i>	<i>5</i>	<i>Total</i>
<b>ESTABLISHMENTS, CAPACITY AND EMPLOYMENT (number)</b>									
<b>December quarter 2000</b>									
Establishments	134	126	72	90	22	135	70	15	332
Guest rooms	9 540	5 861	3 924	2 900	753	7 430	5 635	2 607	19 325
Bed spaces	23 954	15 901	13 357	7 238	1 890	20 532	16 450	7 102	53 212
Persons employed	6 964	2 081	1 398	1 492	363	2 865	2 923	2 800	10 443
<b>December quarter 2001</b>									
Establishments	129	124	68	79	22	135	72	13	321
Guest rooms	9 464	5 561	4 103	2 554	683	7 423	5 838	2 630	19 128
Bed spaces	23 929	15 165	13 765	6 426	1 755	20 549	17 061	7 068	52 859
Persons employed	6 558	1 736	1 442	1 298	350	2 804	2 939	2 345	9 736
<b>ROOM NIGHTS OCCUPIED ('000)</b>									
<b>2000</b>									
<i>December quarter</i>	535.9	272.6	207.5	102.3	28.9	360.9	341.2	182.7	1 016.0
<b>2001</b>									
October	178.1	90.4	73.4	33.7	10.2	126.0	118.7	53.2	341.8
November	168.5	82.5	68.1	31.0	9.2	112.2	115.3	51.4	319.1
December	158.8	77.1	70.7	29.0	8.9	108.2	107.3	53.1	306.6
<i>December quarter</i>	505.4	249.9	212.2	93.7	28.4	346.4	341.3	157.7	967.5
<b>ROOM OCCUPANCY RATES (%)</b>									
<b>2000</b>									
<i>December quarter</i>	61.2	50.6	57.5	38.6	41.7	52.8	65.9	76.2	57.2
<b>2001</b>									
October	60.7	52.4	57.7	42.6	48.3	54.7	65.6	65.3	57.6
November	59.4	49.4	55.3	40.4	45.1	50.4	65.8	65.1	55.6
December	54.1	44.7	55.6	36.7	42.1	47.0	59.3	65.1	51.7
<i>December quarter</i>	58.1	48.8	56.2	39.9	45.2	50.7	63.5	65.2	55.0
<b>GUEST NIGHTS ('000)</b>									
<b>2000</b>									
<i>December quarter</i>	815.4	461.2	447.3	162.3	47.0	618.9	586.4	309.3	1 723.9
<b>2001</b>									
October	268.4	154.3	162.7	53.6	17.4	219.4	204.3	90.7	585.3
November	248.2	136.2	143.2	45.5	14.0	192.5	189.6	86.0	527.6
December	261.1	140.3	171.6	49.5	15.2	202.9	204.6	100.8	573.0
<i>December quarter</i>	777.7	430.7	477.5	148.6	46.7	614.7	598.5	277.5	1 685.9
<b>BED OCCUPANCY RATES (%)</b>									
<b>2000</b>									
<i>December quarter</i>	37.0	31.5	36.4	24.5	27.0	32.8	38.8	47.3	35.2
<b>2001</b>									
October	36.2	32.8	38.1	26.9	32.0	34.4	38.6	41.4	35.7
November	34.6	29.9	34.7	23.6	26.6	31.2	37.0	40.6	33.3
December	35.2	29.8	40.2	24.8	28.0	31.8	38.7	46.0	35.0
<i>December quarter</i>	35.3	30.9	37.7	25.1	28.9	32.5	38.1	42.7	34.7

(a) Comprising establishments with 15 or more rooms or units. See Explanatory Notes, paragraph 7.



# 7 HOTELS, MOTELS, GUEST HOUSES AND SERVICED APARTMENTS (a)—WA *continued*

## STAR GRADING .....

Period	Licensed hotels with facilities	Motels and guest houses	Serviced apartments	1 and Ungraded	2	3	4	5	Total
GUEST ARRIVALS ('000)									
<b>2000</b>									
December quarter	358.8	220.1	145.8	76.3	22.0	296.8	222.9	106.7	724.8
<b>2001</b>									
October	124.4	78.9	48.6	23.7	9.1	105.5	82.0	31.5	251.9
November	116.4	68.2	44.1	20.6	7.3	92.0	76.8	32.0	228.7
December	121.6	71.6	49.4	20.7	8.0	98.3	79.1	36.5	242.6
December quarter	362.4	218.7	142.1	65.0	24.4	295.9	237.9	100.0	723.2
AVERAGE LENGTH OF STAY (days)									
<b>2000</b>									
December quarter	2.3	2.1	3.1	2.1	2.1	2.1	2.6	2.9	2.4
<b>2001</b>									
December quarter	2.1	2.0	3.4	2.3	1.9	2.1	2.5	2.8	2.3
TAKINGS FROM ACCOMMODATION (\$'000)									
<b>2000</b>									
December quarter	61 708	22 870	21 561	6 504	2 066	29 197	40 254	28 118	106 139
<b>2001</b>									
October	19 695	7 510	7 848	2 368	830	10 484	13 695	7 675	35 053
November	18 445	6 628	7 058	2 051	711	9 120	12 873	7 375	32 131
December	17 397	6 443	8 130	2 051	696	9 177	12 209	7 838	31 970
December quarter	55 536	20 580	23 037	6 470	2 237	28 780	38 777	22 888	99 153
AVERAGE TAKINGS PER ROOM NIGHT OCCUPIED (\$)									
<b>2000</b>									
December quarter	115.1	83.9	103.9	63.6	71.6	80.9	118.0	153.9	104.5
<b>2001</b>									
October	110.6	83.1	107.0	70.3	81.1	83.2	115.4	144.1	102.5
November	109.4	80.4	103.6	66.2	76.9	81.3	111.7	143.6	100.7
December	109.6	83.6	115.0	70.6	78.1	84.8	113.7	147.6	104.3
December quarter	109.9	82.3	108.6	69.0	78.8	83.1	113.6	145.1	102.5
AVERAGE TAKINGS PER AVAILABLE ROOM NIGHT (\$)									
<b>2000</b>									
December quarter	70.5	42.5	59.7	24.6	29.8	42.7	77.7	117.2	59.8
<b>2001</b>									
October	67.1	43.6	61.7	29.9	39.2	45.6	75.7	94.1	59.1
November	65.0	39.7	57.3	26.8	34.7	41.0	73.5	93.5	56.0
December	59.3	37.4	63.9	25.9	32.9	39.9	67.5	96.1	53.9
December quarter	63.8	40.2	61.0	27.5	35.6	42.1	72.2	94.6	56.3

(a) Comprising establishments with 15 or more rooms or units. See Explanatory Notes, paragraph 7.

## STAR GRADING .....

Period	Licensed hotels with facilities	Motels and guest houses	Serviced apartments	1 and ungraded	2	3	4 and 5	Total
ESTABLISHMENTS, CAPACITY AND EMPLOYMENT (number)								
<b>December quarter 2000</b>								
Establishments	54	49	25	9	17	71	31	128
Guest rooms	2 906	1 677	879	245	532	2 635	2 050	5 462
Bed spaces	8 007	5 226	3 225	731	1 412	8 117	6 198	16 458
Persons employed	2 880	693	426	166	258	1 281	2 294	3 999
<b>December quarter 2001</b>								
Establishments	53	49	26	11	14	71	32	128
Guest rooms	2 900	1 646	1 011	301	439	2 629	2 188	5 557
Bed spaces	7 955	5 178	3 458	970	1 090	8 153	6 378	16 591
Persons employed	2 743	715	458	207	192	1 305	2 212	3 916
ROOM NIGHTS OCCUPIED ('000)								
<b>2000</b>								
December quarter	141.7	80.3	47.6	7.8	14.5	121.7	125.6	269.5
<b>2001</b>								
October	45.7	27.5	18.2	3.4	3.5	40.9	43.7	91.5
November	48.9	27.5	18.4	3.4	3.5	42.7	45.2	94.9
December	44.9	24.8	16.5	3.5	3.4	38.0	41.4	86.2
December quarter	139.5	79.8	53.2	10.2	10.4	121.6	130.3	272.6
ROOM OCCUPANCY RATES (%)								
<b>2000</b>								
December quarter	53.0	52.0	58.8	34.5	29.5	50.2	66.6	53.6
<b>2001</b>								
October	50.9	53.9	58.2	36.3	25.8	50.2	64.4	53.1
November	56.2	55.8	60.8	37.2	26.8	54.2	68.9	56.9
December	50.0	48.6	52.7	37.5	25.0	46.6	61.0	50.1
December quarter	52.3	52.7	57.2	37.0	25.8	50.3	64.7	53.3
GUEST NIGHTS ('000)								
<b>2000</b>								
December quarter	232.0	152.6	103.6	18.2	22.1	235.4	212.4	488.2
<b>2001</b>								
October	70.5	51.5	36.5	7.1	5.5	78.3	67.5	158.4
November	77.0	50.5	35.1	6.8	5.5	78.8	71.5	162.6
December	78.5	49.3	39.3	8.7	5.4	78.4	74.7	167.2
December quarter	226.0	151.3	110.9	22.6	16.4	235.6	213.6	488.2
BED OCCUPANCY RATES (%)								
<b>2000</b>								
December quarter	31.5	31.7	34.9	27.1	17.0	31.5	37.3	32.2
<b>2001</b>								
October	28.6	32.1	34.1	23.7	16.3	31.0	34.1	30.8
November	32.2	32.5	33.8	23.4	16.7	32.2	37.4	32.7
December	31.9	30.7	36.7	28.8	16.0	31.0	37.8	32.5
December quarter	30.9	31.8	34.9	25.3	16.3	31.4	36.4	32.0

(a) Comprising establishments with 15 or more rooms or units. See Explanatory Notes, paragraph 7.

## STAR GRADING .....

Period	Licensed hotels with facilities	Motels and guest houses	Serviced apartments	1 and ungraded	2	3	4 and 5	Total
GUEST ARRIVALS ('000)								
<b>2000</b>								
December quarter	131.8	87.4	43.8	7.7	12.3	134.5	108.5	262.9
<b>2001</b>								
October	37.7	29.0	14.4	3.5	3.6	43.2	30.9	81.1
November	43.8	29.9	16.3	3.7	4.0	46.1	36.3	90.0
December	42.2	29.7	16.5	4.4	3.6	44.9	35.4	88.3
December quarter	123.6	88.6	47.2	11.5	11.2	134.2	102.5	259.4
AVERAGE LENGTH OF STAY (days)								
<b>2000</b>								
December quarter	1.8	1.7	2.4	2.4	1.8	1.8	2.0	1.9
<b>2001</b>								
December quarter	1.8	1.7	2.3	2.0	1.5	1.8	2.1	1.9
TAKINGS FROM ACCOMMODATION (\$'000)								
<b>2000</b>								
December quarter	13 794	6 950	5 619	720	806	9 657	15 182	26 364
<b>2001</b>								
October	4 130	2 453	2 048	320	213	3 253	4 846	8 631
November	4 797	2 480	2 121	294	227	3 411	5 467	9 398
December	4 386	2 362	2 084	346	188	3 300	4 999	8 832
December quarter	13 313	7 295	6 254	960	627	9 963	15 311	26 862
AVERAGE TAKINGS PER ROOM NIGHT OCCUPIED (\$)								
<b>2000</b>								
December quarter	97.4	86.6	118.2	92.6	55.8	79.3	120.9	97.8
<b>2001</b>								
October	90.3	89.2	112.3	94.7	60.6	79.5	110.9	94.4
November	98.1	90.1	115.1	87.6	64.2	79.8	120.9	99.1
December	97.7	95.2	126.2	98.8	55.2	86.9	120.8	102.4
December quarter	95.4	91.4	117.6	93.8	60.1	81.9	117.5	98.6
AVERAGE TAKINGS PER AVAILABLE ROOM NIGHT (\$)								
<b>2000</b>								
December quarter	51.6	45.0	69.5	31.9	16.5	39.8	80.5	52.5
<b>2001</b>								
October	45.9	48.1	65.3	34.3	15.6	39.9	71.4	50.1
November	55.1	50.2	69.9	32.6	17.2	43.2	83.3	56.4
December	48.8	46.3	66.5	37.0	13.8	40.5	73.7	51.3
December quarter	49.9	48.2	67.2	34.7	15.5	41.2	76.1	52.5

(a) Comprising establishments with 15 or more rooms or units. See Explanatory Notes, paragraph 7.

## STAR GRADING .....

Period	Licensed hotels with facilities	Motels and guest houses	Serviced apartments	1 and Ungraded	2	3	4 and 5	Total
ESTABLISHMENTS, CAPACITY AND EMPLOYMENT (number)								
<b>December quarter 2000</b>								
Establishments	23	49	17	21	19	33	16	89
Guest rooms	1 932	3 143	1 156	701	779	2 463	2 288	6 231
Bed spaces	5 519	9 333	3 928	1 918	2 387	7 619	6 856	18 780
Persons employed	1 703	1 029	359	272	226	930	1 663	3 091
<b>December quarter 2001</b>								
Establishments	23	49	17	21	19	33	16	89
Guest rooms	1 976	3 187	1 146	737	776	2 512	2 284	6 309
Bed spaces	5 251	9 610	3 785	2 011	2 365	7 891	6 379	18 646
Persons employed	1 615	1 012	363	276	242	933	1 539	2 990
ROOM NIGHTS OCCUPIED ('000)								
<b>2000</b>								
December quarter	107.4	150.7	59.6	26.8	28.1	127.0	135.8	317.7
<b>2001</b>								
October	41.3	59.9	22.8	10.5	11.5	50.6	51.5	124.0
November	37.2	51.9	19.1	8.4	10.2	43.7	45.8	108.1
December	26.3	35.7	15.2	7.2	7.0	32.1	31.1	77.3
December quarter	104.8	147.5	57.1	26.0	28.7	126.3	128.4	309.4
ROOM OCCUPANCY RATES (%)								
<b>2000</b>								
December quarter	60.4	52.1	56.0	41.6	39.2	56.0	64.5	55.4
<b>2001</b>								
October	67.4	60.7	64.1	45.7	47.7	65.0	72.7	63.4
November	62.7	54.2	55.5	38.1	43.8	57.9	66.9	57.1
December	43.0	36.4	42.9	31.3	29.0	41.5	43.9	39.6
December quarter	57.7	50.4	54.2	38.4	40.1	54.8	61.1	53.4
GUEST NIGHTS ('000)								
<b>2000</b>								
December quarter	175.3	262.4	112.0	47.9	48.5	235.8	217.5	549.6
<b>2001</b>								
October	65.5	102.1	42.6	17.7	18.5	92.8	81.1	210.2
November	57.8	85.3	35.5	13.9	16.5	77.6	70.6	178.6
December	43.8	63.6	33.9	13.2	14.1	60.9	53.0	141.3
December quarter	167.1	251.0	112.1	44.8	49.2	231.3	204.8	530.1
BED OCCUPANCY RATES (%)								
<b>2000</b>								
December quarter	34.5	30.6	31.0	27.2	22.1	33.6	34.5	31.8
<b>2001</b>								
October	40.2	34.3	36.3	28.4	25.3	37.9	41.0	36.4
November	36.7	29.6	31.3	23.0	23.3	32.8	36.9	31.9
December	26.9	21.5	28.9	21.2	19.3	25.1	26.8	24.5
December quarter	34.6	28.4	32.2	24.2	22.6	31.9	34.9	30.9

(a) Comprising establishments with 15 or more rooms or units. See Explanatory Notes, paragraph 7.

## STAR GRADING .....

Period	Licensed hotels with facilities	Motels and guest houses	Serviced apartments	1 and Ungraded	2	3	4 and 5	Total
GUEST ARRIVALS ('000)								
<b>2000</b>								
December quarter	100.6	148.1	42.1	21.7	29.1	137.5	102.6	290.8
<b>2001</b>								
October	38.5	63.3	15.6	9.0	11.3	55.6	41.4	117.3
November	35.3	53.9	13.7	7.2	9.6	46.1	40.1	102.9
December	26.5	35.9	12.9	6.3	9.0	33.8	26.3	75.3
December quarter	100.4	153.1	42.1	22.5	29.8	135.5	107.8	295.5
AVERAGE LENGTH OF STAY (days)								
<b>2000</b>								
December quarter	1.7	1.8	2.7	2.2	1.7	1.7	2.1	1.9
<b>2001</b>								
December quarter	1.7	1.6	2.7	2.0	1.6	1.7	1.9	1.8
TAKINGS FROM ACCOMMODATION (\$'000)								
<b>2000</b>								
December quarter	14 720	14 663	6 433	1 911	1 915	15 189	16 801	35 816
<b>2001</b>								
October	5 435	6 112	2 562	846	851	6 169	6 243	14 109
November	4 763	5 072	2 101	632	633	5 118	5 552	11 935
December	3 331	3 330	1 707	513	475	3 529	3 851	8 368
December quarter	13 528	14 514	6 369	1 991	1 959	14 816	15 646	34 412
AVERAGE TAKINGS PER ROOM NIGHT OCCUPIED (\$)								
<b>2000</b>								
December quarter	137.0	97.3	108.0	71.2	68.1	119.6	123.8	112.7
<b>2001</b>								
October	131.6	102.0	112.5	80.9	74.2	121.9	121.3	113.8
November	128.1	97.8	110.0	75.0	62.1	117.2	121.1	110.4
December	126.5	93.2	112.0	71.8	68.0	110.0	123.8	108.2
December quarter	129.1	98.4	111.5	76.5	68.4	117.3	121.8	111.2
AVERAGE TAKINGS PER AVAILABLE ROOM NIGHT (\$)								
<b>2000</b>								
December quarter	82.8	50.7	60.5	29.6	26.7	67.0	79.8	62.5
<b>2001</b>								
October	88.7	61.9	72.1	37.0	35.4	79.2	88.2	72.1
November	80.3	53.0	61.1	28.6	27.2	67.9	81.0	63.1
December	54.4	33.9	48.1	22.5	19.8	45.6	54.4	42.9
December quarter	74.4	49.6	60.4	29.4	27.4	64.3	74.5	59.3

(a) Comprising establishments with 15 or more rooms or units. See Explanatory Notes, paragraph 7.

## STAR GRADING .....

<i>Period</i>	<i>Licensed hotels with facilities</i>	<i>Motels and guest houses</i>	<i>Serviced apartments</i>	<i>1 and ungraded</i>	<i>2</i>	<i>3</i>	<i>4 and 5</i>	<i>Total</i>
ESTABLISHMENTS, CAPACITY AND EMPLOYMENT (number)								
<b>December quarter 2000</b>								
Establishments	15	25	20	10	7	21	22	60
Guest rooms	1 905	1 676	1 439	513	480	1 481	2 546	5 020
Bed spaces	5 120	5 187	4 888	1 570	1 596	4 520	7 509	15 195
Persons employed	1 199	540	430	127	91	533	1 418	2 169
<b>December quarter 2001</b>								
Establishments	15	27	20	10	7	21	24	62
Guest rooms	1 904	1 845	1 521	482	479	1 488	2 821	5 270
Bed spaces	4 819	5 702	5 071	1 464	1 554	4 675	7 899	15 592
Persons employed	1 428	627	430	120	84	506	1 775	2 485
ROOM NIGHTS OCCUPIED ('000)								
<b>2000</b>								
<i>December quarter</i>	108.6	80.5	82.8	23.3	23.7	73.5	151.3	271.9
<b>2001</b>								
October	39.8	33.2	32.0	8.9	8.7	28.6	58.8	105.0
November	34.6	29.8	29.8	8.1	6.6	24.6	54.9	94.2
December	29.5	23.9	25.5	6.6	5.9	20.0	46.4	78.9
<i>December quarter</i>	103.9	86.9	87.3	23.6	21.1	73.2	160.1	278.1
ROOM OCCUPANCY RATES (%)								
<b>2000</b>								
<i>December quarter</i>	62.0	52.5	62.5	50.3	53.8	53.9	64.6	59.0
<b>2001</b>								
October	67.4	58.1	67.8	59.2	58.4	62.0	67.3	64.3
November	60.6	53.8	65.4	55.8	46.1	55.2	64.9	59.6
December	50.0	41.7	54.1	44.4	39.4	43.3	53.1	48.3
<i>December quarter</i>	59.3	51.2	62.4	53.1	48.0	53.5	61.7	57.4
GUEST NIGHTS ('000)								
<b>2000</b>								
<i>December quarter</i>	156.9	137.2	165.0	41.4	46.7	142.2	228.9	459.2
<b>2001</b>								
October	61.8	59.2	61.5	17.6	19.3	54.6	91.1	182.6
November	48.2	54.4	52.7	16.5	15.1	44.3	79.4	155.3
December	46.9	42.5	50.4	13.0	13.0	37.6	76.3	139.8
<i>December quarter</i>	157.0	156.1	164.6	47.1	47.4	136.4	246.8	477.7
BED OCCUPANCY RATES (%)								
<b>2000</b>								
<i>December quarter</i>	33.3	28.8	36.7	28.8	31.8	34.2	33.1	32.9
<b>2001</b>								
October	41.4	33.5	39.1	38.8	40.0	37.7	37.2	37.8
November	33.3	31.8	34.6	37.5	32.4	31.6	33.5	33.2
December	31.4	24.0	32.1	28.6	27.0	25.9	31.2	28.9
<i>December quarter</i>	35.4	29.8	35.3	34.9	33.1	31.7	34.0	33.3

(a) Comprising establishments with 15 or more rooms or units. See Explanatory Notes, paragraph 7.

## STAR GRADING .....

<i>Period</i>	<i>Licensed hotels with facilities</i>	<i>Motels and guest houses</i>	<i>Serviced apartments</i>	<i>1 and ungraded</i>	<i>2</i>	<i>3</i>	<i>4 and 5</i>	<i>Total</i>
GUEST ARRIVALS ('000)								
<b>2000</b>								
<i>December quarter</i>	84.1	68.7	41.8	13.5	16.6	56.0	108.6	194.6
<b>2001</b>								
October	30.7	29.5	14.9	6.7	6.9	22.0	39.6	75.1
November	25.8	25.3	12.9	6.3	4.9	17.9	34.9	64.0
December	24.4	22.3	11.4	4.7	4.9	15.7	32.7	58.1
<i>December quarter</i>	80.9	77.1	39.2	17.7	16.6	55.6	107.2	197.2
AVERAGE LENGTH OF STAY (days)								
<b>2000</b>								
<i>December quarter</i>	1.9	2.0	3.9	3.1	2.8	2.5	2.1	2.4
<b>2001</b>								
<i>December quarter</i>	1.9	2.0	4.2	2.7	2.8	2.5	2.3	2.4
TAKINGS FROM ACCOMMODATION (\$'000)								
<b>2000</b>								
<i>December quarter</i>	14 491	6 826	8 798	2 339	1 443	6 208	20 125	30 115
<b>2001</b>								
October	5 107	2 762	3 625	667	591	2 545	7 690	11 494
November	4 424	2 394	3 216	586	457	2 079	6 912	10 034
December	3 579	1 960	2 718	505	399	1 687	5 666	8 257
<i>December quarter</i>	13 110	7 116	9 560	1 758	1 447	6 312	20 268	29 785
AVERAGE TAKINGS PER ROOM NIGHT OCCUPIED (\$)								
<b>2000</b>								
<i>December quarter</i>	133.4	84.8	106.3	100.3	60.8	84.5	133.0	110.8
<b>2001</b>								
October	128.4	83.1	113.4	75.4	68.2	89.0	130.7	109.5
November	127.8	80.4	107.8	72.5	69.0	84.4	125.9	106.5
December	121.4	82.1	106.5	76.1	68.1	84.5	122.1	104.7
<i>December quarter</i>	126.2	81.9	109.5	74.6	68.4	86.2	126.6	107.1
AVERAGE TAKINGS PER AVAILABLE ROOM NIGHT (\$)								
<b>2000</b>								
<i>December quarter</i>	82.7	44.5	66.5	50.5	32.7	45.6	85.9	65.3
<b>2001</b>								
October	86.5	48.3	76.9	44.7	39.8	55.2	87.9	70.4
November	77.5	43.3	70.5	40.5	31.8	46.6	81.7	63.5
December	60.6	34.3	57.7	33.8	26.9	36.6	64.8	50.5
<i>December quarter</i>	74.8	41.9	68.3	39.6	32.8	46.1	78.1	61.4

(a) Comprising establishments with 15 or more rooms or units. See Explanatory Notes, paragraph 7.

Period	South Coast	Illawarra	Sydney	Snowy Mountains	Capital Country	The Murray	Riverina	Explorer Country
ESTABLISHMENTS, CAPACITY AND EMPLOYMENT (number)								
<b>December quarter 2000</b>								
Establishments	80	33	296	57	68	98	68	122
Guest rooms	1 947	1 126	33 116	2 284	2 142	2 846	1 936	3 537
Bed spaces	6 020	3 506	83 811	9 091	6 333	9 122	5 717	10 900
Persons employed	638	660	22 555	378	876	913	691	1 226
<b>December quarter 2001</b>								
Establishments	82	33	296	55	68	99	69	121
Guest rooms	2 015	1 126	33 362	2 265	2 126	2 860	1 954	3 495
Bed spaces	6 240	3 460	82 509	9 013	6 008	8 850	5 773	10 580
Persons employed	673	618	21 012	365	836	914	654	1 247
ROOM NIGHTS OCCUPIED ('000)								
<b>2000</b>								
December quarter	87.7	57.2	2 096.0	25.0	91.3	123.4	98.8	159.4
<b>2001</b>								
October	32.4	19.7	639.2	7.2	38.6	51.6	36.2	70.7
November	29.6	19.2	655.1	8.0	33.8	47.1	33.1	54.4
December	27.5	18.1	641.9	8.4	26.6	38.2	27.4	50.4
December quarter	89.5	57.0	1 936.1	23.6	99.0	137.0	96.8	175.5
ROOM OCCUPANCY RATES (%)								
<b>2000</b>								
December quarter	49.0	55.3	68.8	12.0	46.3	47.1	55.5	49.0
<b>2001</b>								
October	51.9	56.3	61.8	10.2	58.5	58.3	59.8	65.2
November	49.0	56.9	65.5	11.8	53.1	55.0	56.5	51.9
December	44.0	52.0	62.7	12.1	40.4	43.0	45.3	46.6
December quarter	48.3	55.0	63.3	11.4	50.6	52.0	53.8	54.6
GUEST NIGHTS ('000)								
<b>2000</b>								
December quarter	168.1	99.9	3 410.0	53.6	163.5	234.1	161.2	286.1
<b>2001</b>								
October	60.5	32.2	1 040.0	15.0	72.3	97.2	60.4	132.0
November	53.3	30.8	1 057.0	16.4	58.9	86.3	52.0	88.4
December	56.3	33.9	1 133.6	18.5	49.3	73.7	48.5	93.7
December quarter	170.2	96.8	3 230.6	50.0	180.5	257.2	160.9	314.1
GUEST ARRIVALS ('000)								
<b>2000</b>								
December quarter	99.2	51.8	1 270.5	26.9	109.1	136.1	113.3	201.7
<b>2001</b>								
October	34.6	16.0	416.2	8.5	46.9	56.9	43.0	89.7
November	31.6	16.8	433.7	9.5	38.4	51.1	36.1	61.8
December	31.4	16.5	446.8	8.8	33.1	42.5	35.2	69.5
December quarter	97.6	49.2	1 296.7	26.8	118.4	150.4	114.2	221.0
TAKINGS FROM ACCOMMODATION (\$'000)								
<b>2000</b>								
December quarter	6 890	6 180	342 578	2 117	9 050	9 548	7 589	12 137
<b>2001</b>								
October	2 498	2 090	90 747	576	3 403	4 013	2 839	5 692
November	2 322	2 027	92 982	633	3 100	3 680	2 581	4 114
December	2 503	2 042	93 116	710	2 399	3 023	2 205	3 882
December quarter	7 324	6 159	276 845	1 919	8 901	10 716	7 625	13 688



<i>Period</i>	<i>Hunter</i>	<i>North Coast NSW</i>	<i>Northern Rivers Tropical NSW</i>	<i>Big Sky Country</i>	<i>The Living Outback</i>	<i>Central Coast</i>	<i>Blue Mountains</i>
ESTABLISHMENTS, CAPACITY AND EMPLOYMENT (number)							
<b>December quarter 2000</b>							
Establishments	99	126	76	89	39	39	34
Guest rooms	3 793	3 865	2 117	2 477	970	1 366	1 306
Bed spaces	12 098	12 580	6 613	7 402	2 781	4 554	3 675
Persons employed	2 213	1 759	669	841	295	931	1 077
<b>December quarter 2001</b>							
Establishments	101	124	77	91	38	39	33
Guest rooms	3 973	3 844	2 173	2 523	949	1 515	1 259
Bed spaces	12 421	12 165	6 866	7 607	2 799	5 029	3 536
Persons employed	2 342	1 732	679	862	290	902	923
ROOM NIGHTS OCCUPIED ('000)							
<b>2000</b>							
<i>December quarter</i>	180.5	200.9	100.3	106.9	40.4	67.3	62.8
<b>2001</b>							
October	73.0	73.8	39.6	42.4	16.1	24.1	23.0
November	65.3	65.9	35.5	35.6	12.2	22.3	19.0
December	61.1	67.1	35.7	32.2	12.1	23.7	16.4
<i>December quarter</i>	199.4	206.8	110.8	110.2	40.4	70.1	58.4
ROOM OCCUPANCY RATES (%)							
<b>2000</b>							
<i>December quarter</i>	51.7	56.7	51.5	46.9	45.2	53.6	52.2
<b>2001</b>							
October	59.3	61.9	58.8	54.2	54.6	51.3	59.0
November	54.8	57.1	54.5	47.0	43.0	49.1	50.2
December	49.6	56.3	53.4	41.2	41.1	50.4	42.0
<i>December quarter</i>	54.6	58.5	55.6	47.5	46.2	50.3	50.4
GUEST NIGHTS ('000)							
<b>2000</b>							
<i>December quarter</i>	326.5	401.4	191.5	185.4	66.6	129.7	111.9
<b>2001</b>							
October	137.2	153.9	75.3	74.2	27.9	49.7	42.7
November	117.4	127.2	65.9	56.0	20.0	42.7	32.8
December	122.6	150.2	74.5	58.8	21.7	52.2	29.3
<i>December quarter</i>	377.2	431.3	215.7	189.0	69.6	144.6	104.8
GUEST ARRIVALS ('000)							
<b>2000</b>							
<i>December quarter</i>	182.9	230.2	109.3	130.6	40.5	63.1	66.9
<b>2001</b>							
October	68.4	86.7	42.8	51.8	17.3	26.2	24.8
November	66.5	72.3	38.3	39.2	12.0	24.3	20.3
December	62.3	85.2	39.0	43.9	13.2	23.5	18.1
<i>December quarter</i>	197.2	244.3	120.1	134.8	42.5	74.0	63.2
TAKINGS FROM ACCOMMODATION (\$'000)							
<b>2000</b>							
<i>December quarter</i>	21 197	17 611	8 509	7 841	2 564	7 986	8 220
<b>2001</b>							
October	8 570	6 781	3 396	3 100	1 061	2 870	2 908
November	7 578	5 692	2 962	2 589	822	2 578	2 319
December	7 537	7 068	3 465	2 437	812	3 067	2 061
<i>December quarter</i>	23 686	19 541	9 822	8 126	2 695	8 515	7 288

Period	Melbourne	Wimmera	Mallee	Western	Western Grampians	Bendigo Loddon	Peninsula	Central Murray	Goulburn	High Country
<b>ESTABLISHMENTS, CAPACITY AND EMPLOYMENT (number)</b>										
<b>December quarter 2000</b>										
Establishments	230	6	42	53	20	31	21	21	27	70
Guest rooms	17 935	117	1 254	1 395	480	784	739	560	696	1 876
Bed spaces	45 195	336	3 786	4 301	1 351	2 380	2 020	1 696	2 008	6 693
Persons employed	15 713	33	510	802	207	360	421	148	379	557
<b>December quarter 2001</b>										
Establishments	238	6	41	54	20	31	21	23	27	73
Guest rooms	19 076	117	1 229	1 436	489	782	741	602	700	1 935
Bed spaces	48 070	339	3 660	4 354	1 416	2 349	1 996	1 715	2 008	6 816
Persons employed	15 368	28	483	797	238	354	393	173	394	596
<b>ROOM NIGHTS OCCUPIED ('000)</b>										
<b>2000</b>										
December quarter	1 180.7	4.6	56.4	67.2	22.2	36.7	27.9	23.5	31.1	40.2
<b>2001</b>										
October	409.3	1.9	23.7	24.8	8.1	15.9	9.2	10.2	11.2	13.2
November	439.8	1.8	19.0	24.4	8.1	14.1	10.5	9.5	10.9	15.1
December	356.7	1.5	15.6	23.2	6.2	10.1	9.9	7.3	9.7	13.6
December quarter	1 205.8	5.2	58.3	72.4	22.5	40.0	29.6	27.0	31.9	41.9
<b>ROOM OCCUPANCY RATES (%)</b>										
<b>2000</b>										
December quarter	71.6	42.9	48.9	52.3	50.3	50.8	41.0	45.7	48.6	24.0
<b>2001</b>										
October	69.2	52.6	62.2	55.7	53.7	65.4	39.8	54.8	51.8	22.7
November	76.9	50.7	51.6	56.7	55.5	60.2	47.4	52.8	52.1	26.3
December	60.3	42.0	40.9	52.0	41.2	41.5	43.0	38.9	44.7	23.0
December quarter	68.7	48.4	51.5	54.8	50.1	55.7	43.4	48.8	49.5	24.0
<b>GUEST NIGHTS ('000)</b>										
<b>2000</b>										
December quarter	1 898.9	7.4	98.5	128.7	37.0	63.2	57.7	42.0	49.7	78.5
<b>2001</b>										
October	664.2	2.6	41.4	46.0	13.1	27.7	16.2	17.6	17.7	26.6
November	709.9	2.4	31.7	45.8	12.7	24.7	18.3	16.4	17.2	30.0
December	619.5	2.5	28.1	46.9	11.3	18.7	19.1	13.2	15.9	28.8
December quarter	1 993.6	7.6	101.3	138.8	37.1	71.1	53.7	47.2	50.8	85.4
<b>GUEST ARRIVALS ('000)</b>										
<b>2000</b>										
December quarter	812.5	5.5	58.7	84.5	27.1	44.4	27.6	28.0	32.2	46.2
<b>2001</b>										
October	269.0	1.5	24.5	29.8	10.0	16.4	9.7	11.3	12.6	15.3
November	281.7	1.5	20.2	30.1	9.2	15.2	11.0	10.6	11.5	16.6
December	251.5	1.6	17.8	28.8	8.1	13.2	9.8	8.6	11.4	15.2
December quarter	802.2	4.6	62.5	88.7	27.3	44.8	30.5	30.5	35.5	47.1
<b>TAKINGS FROM ACCOMMODATION (\$'000)</b>										
<b>2000</b>										
December quarter	171 542	252	4 073	6 491	1 677	3 112	3 658	1 928	2 343	3 348
<b>2001</b>										
October	57 721	104	1 763	2 380	644	1 390	1 124	791	864	1 125
November	64 814	97	1 442	2 419	639	1 256	1 226	724	876	1 293
December	48 263	89	1 194	2 455	503	884	1 282	580	784	1 247
December quarter	170 799	291	4 399	7 254	1 786	3 529	3 631	2 094	2 525	3 665

Period	Lakes	Gippsland	Melbourne East	Geelong	Macedon	Spa Country	Ballarat	Central Highlands	Upper Yarra	Murray East	Phillip Island
ESTABLISHMENTS, CAPACITY AND EMPLOYMENT (number)											
<b>December quarter 2000</b>											
Establishments	25	35	14	22	3	5	26	14	13	13	10
Guest rooms	669	1 029	449	702	72	118	873	336	430	307	334
Bed spaces	2 012	3 041	1 042	2 034	163	281	2 706	1 037	1 084	924	1 148
Persons employed	237	303	490	349	62	114	481	94	233	67	140
<b>December quarter 2001</b>											
Establishments	24	34	12	23	3	5	25	15	11	14	11
Guest rooms	666	998	360	804	72	125	873	358	389	422	374
Bed spaces	1 956	2 925	875	2 179	163	298	2 764	1 148	1 035	1 181	1 357
Persons employed	238	277	322	434	56	125	477	102	203	115	160
ROOM NIGHTS OCCUPIED ('000)											
<b>2000</b>											
December quarter	24.1	32.3	14.9	32.5	2.4	4.9	42.1	15.8	12.2	12.4	14.7
<b>2001</b>											
October	8.2	13.7	4.4	12.7	0.8	2.7	16.6	5.5	4.5	5.5	5.7
November	8.2	12.9	4.7	12.8	0.6	2.7	15.0	5.7	4.5	5.2	5.6
December	8.5	10.2	3.4	11.4	0.5	1.9	11.5	4.2	2.8	4.4	5.7
December quarter	25.0	36.8	12.5	36.9	1.9	7.3	43.1	15.4	11.7	15.1	17.0
ROOM OCCUPANCY RATES (%)											
<b>2000</b>											
December quarter	39.4	34.1	36.0	50.3	36.7	44.8	52.4	51.0	30.9	44.0	47.9
<b>2001</b>											
October	39.8	44.2	39.0	50.8	35.6	68.9	61.3	49.9	37.1	42.1	49.1
November	41.1	43.2	43.5	53.0	30.0	71.1	57.3	53.1	38.3	40.7	49.6
December	41.4	33.0	30.8	45.9	21.5	50.2	42.4	37.9	23.2	33.6	49.2
December quarter	40.7	40.1	37.7	49.9	29.0	63.3	53.6	46.9	32.8	38.8	49.3
GUEST NIGHTS ('000)											
<b>2000</b>											
December quarter	45.7	47.6	21.7	51.9	3.3	8.4	89.8	31.2	19.2	21.7	36.5
<b>2001</b>											
October	14.6	19.5	6.5	20.6	1.0	3.9	37.1	10.6	6.9	9.2	12.4
November	15.1	19.0	7.2	20.3	0.9	4.1	29.9	11.8	6.8	8.3	13.7
December	17.7	16.6	5.6	19.8	0.6	3.0	24.3	8.8	4.5	7.8	15.6
December quarter	47.4	55.0	19.3	60.7	2.6	11.0	91.3	31.3	18.1	25.3	41.7
GUEST ARRIVALS ('000)											
<b>2000</b>											
December quarter	31.8	31.4	12.6	31.3	2.1	6.4	49.8	18.2	9.2	14.5	16.9
<b>2001</b>											
October	10.8	11.7	4.4	11.3	0.5	2.0	21.4	7.4	3.4	5.6	7.0
November	10.4	11.2	4.9	11.9	0.5	2.1	18.1	7.7	3.3	5.3	8.3
December	11.3	10.1	3.9	11.4	0.4	1.7	14.2	6.2	2.5	5.2	9.4
December quarter	32.6	33.0	13.2	34.7	1.3	5.8	53.7	21.2	9.3	16.1	24.7
TAKINGS FROM ACCOMMODATION (\$'000)											
<b>2000</b>											
December quarter	1 745	2 371	1 745	3 154	288	782	3 725	1 156	1 524	831	1 516
<b>2001</b>											
October	612	1 008	519	1 353	104	376	1 573	450	547	382	607
November	623	980	578	1 304	66	396	1 341	460	602	386	580
December	723	770	430	1 200	62	288	1 042	358	329	315	640
December quarter	1 957	2 759	1 528	3 857	232	1 059	3 957	1 267	1 477	1 084	1 827

Period	Gold Coast	Brisbane	Sunshine Coast	Hervey Bay/ Maryborough	Darling Downs	Bundaberg
ESTABLISHMENTS, CAPACITY AND EMPLOYMENT (number)						
<b>December quarter 2000</b>						
Establishments	151	162	98	43	64	25
Guest rooms	13 216	9 770	4 479	1 608	1 630	621
Bed spaces	43 713	27 352	15 329	5 510	5 183	1 871
Persons employed	8 915	6 826	2 486	761	597	188
<b>December quarter 2001</b>						
Establishments	147	165	98	43	65	27
Guest rooms	13 299	9 889	4 602	1 612	1 656	690
Bed spaces	44 010	27 359	15 960	5 515	5 207	2 119
Persons employed	8 740	6 577	2 360	770	596	228
ROOM NIGHTS OCCUPIED ('000)						
<b>2000</b>						
December quarter	802.0	572.8	227.8	72.2	70.3	29.9
<b>2001</b>						
October	277.9	205.5	91.2	27.4	29.2	12.6
November	253.5	206.2	78.0	22.3	24.6	11.3
December	273.3	173.4	86.2	23.7	22.8	11.4
December quarter	804.6	585.1	255.4	73.3	76.7	35.3
ROOM OCCUPANCY RATES (%)						
<b>2000</b>						
December quarter	66.0	63.7	55.3	48.8	46.9	52.3
<b>2001</b>						
October	67.4	67.0	63.9	54.8	56.9	59.0
November	63.5	69.5	56.5	46.0	49.6	54.4
December	66.3	56.6	60.4	47.4	44.5	53.5
December quarter	65.8	64.3	60.3	49.5	50.3	55.6
GUEST NIGHTS ('000)						
<b>2000</b>						
December quarter	1 843.8	917.1	607.7	144.3	120.4	51.1
<b>2001</b>						
October	647.2	330.9	240.9	56.3	50.9	24.9
November	582.2	313.6	192.8	41.8	41.9	21.9
December	680.0	312.5	247.9	54.0	43.5	24.8
December quarter	1 909.5	957.0	681.6	152.0	136.3	71.5
GUEST ARRIVALS ('000)						
<b>2000</b>						
December quarter	459.3	396.0	184.3	74.0	84.4	34.4
<b>2001</b>						
October	169.6	138.3	71.3	29.0	34.4	15.0
November	163.3	135.7	64.7	24.0	28.8	13.3
December	179.5	134.3	70.3	22.2	30.1	14.7
December quarter	512.4	408.3	206.3	75.2	93.3	43.0
TAKINGS FROM ACCOMMODATION (\$'000)						
<b>2000</b>						
December quarter	89 589	59 588	28 434	6 372	5 152	2 544
<b>2001</b>						
October	32 311	20 954	11 450	2 251	2 157	1 050
November	26 994	21 397	9 717	1 730	1 800	949
December	32 446	17 361	12 149	2 161	1 728	1 039
December quarter	91 751	59 712	33 316	6 141	5 685	3 038

Period	Fitzroy	Mackay	Whitsundays	Northern	Tropical North Queensland	Outback	Great Barrier Reef (a)
ESTABLISHMENTS, CAPACITY AND EMPLOYMENT (number)							
<b>December quarter 2000</b>							
Establishments	84	52	18	55	156	52	17
Guest rooms	3 140	1 694	2 140	2 396	10 250	1 409	2 419
Bed spaces	10 133	4 960	7 820	6 986	31 222	4 000	8 420
Persons employed	1 630	957	2 097	1 440	5 260	502	2 680
<b>December quarter 2001</b>							
Establishments	87	51	21	54	157	54	17
Guest rooms	3 238	1 647	2 500	2 415	10 313	1 485	2 713
Bed spaces	10 248	4 771	9 062	7 064	30 923	4 276	9 245
Persons employed	1 621	943	2 178	1 333	4 800	498	2 828
ROOM NIGHTS OCCUPIED ('000)							
<b>2000</b>							
<i>December quarter</i>	165.0	85.8	126.7	123.3	589.5	54.6	154.9
<b>2001</b>							
October	64.0	29.3	39.7	43.2	196.6	22.5	47.0
November	62.5	27.3	40.5	40.8	187.4	19.5	46.0
December	51.5	27.2	42.2	35.0	170.2	16.0	52.0
<i>December quarter</i>	177.9	83.8	122.5	118.9	554.2	57.9	145.0
ROOM OCCUPANCY RATES (%)							
<b>2000</b>							
<i>December quarter</i>	57.1	55.0	64.4	55.9	62.5	42.1	69.6
<b>2001</b>							
October	63.7	57.4	51.3	57.6	61.5	48.8	55.9
November	64.3	55.2	54.0	56.3	60.6	43.8	56.6
December	51.3	53.4	54.5	46.7	53.2	35.0	61.8
<i>December quarter</i>	59.7	55.4	53.2	53.5	58.4	42.5	58.1
GUEST NIGHTS ('000)							
<b>2000</b>							
<i>December quarter</i>	281.6	145.3	280.0	193.9	1 152.1	75.7	334.1
<b>2001</b>							
October	110.0	51.1	97.1	68.2	375.5	33.1	112.5
November	103.2	45.0	101.9	61.5	348.0	26.8	112.6
December	98.0	51.5	112.6	62.4	339.7	25.7	132.4
<i>December quarter</i>	311.2	147.6	311.7	192.1	1 063.2	85.6	357.5
GUEST ARRIVALS ('000)							
<b>2000</b>							
<i>December quarter</i>	135.2	65.0	85.0	105.1	362.1	46.0	90.3
<b>2001</b>							
October	54.5	23.1	29.1	34.3	116.3	20.4	26.6
November	48.1	20.6	29.0	32.2	107.6	16.3	26.6
December	50.5	23.6	31.3	31.9	101.7	16.5	29.6
<i>December quarter</i>	153.0	67.3	89.4	98.4	325.7	53.2	82.8
TAKINGS FROM ACCOMMODATION (\$'000)							
<b>2000</b>							
<i>December quarter</i>	14 761	6 453	25 237	10 957	73 544	3 886	35 485
<b>2001</b>							
October	5 440	2 345	7 124	3 737	25 040	1 635	10 349
November	5 211	2 140	7 309	3 578	22 673	1 415	10 029
December	4 805	2 372	9 212	3 056	21 783	1 179	12 639
<i>December quarter</i>	15 455	6 857	23 645	10 372	69 496	4 229	33 017

(a) Includes those parts of other Tourism Regions which fall within the Great Barrier Reef geographic area. Great Barrier Reef (TR) data is not included in Queensland totals because the establishments in this Region are included in the figures for other Tourism Regions.

Period	Limestone Coast	Murray-lands	Fleurieu Peninsula	Adelaide	Adelaide Hills	Barossa	Riverland	Clare Valley	Flinders Ranges	Outback SA	Eyre Peninsula	Yorke Peninsula	Kangaroo Island
<b>ESTABLISHMENTS, CAPACITY AND EMPLOYMENT (number)</b>													
<b>December quarter 2000</b>													
Establishments	32	4	16	85	4	9	14	5	19	8	24	8	6
Guest rooms	929	96	508	5 762	132	366	507	142	650	386	760	147	167
Bed spaces	2 765	303	1 637	16 237	335	1 021	1 561	440	1 935	1 065	2 148	461	473
Persons employed	462	40	315	3 613	162	270	508	92	263	181	536	61	111
<b>December quarter 2001</b>													
Establishments	32	4	16	85	4	9	14	4	19	8	24	8	5
Guest rooms	944	96	541	5 729	131	366	501	128	647	384	770	149	150
Bed spaces	2 811	304	1 733	15 746	327	1 029	1 470	402	1 971	1 060	2 177	463	405
Persons employed	458	40	293	3 553	138	320	517	73	285	185	544	73	118
<b>ROOM NIGHTS OCCUPIED ('000)</b>													
<b>2000</b>													
December quarter	46.1	4.3	18.5	343.1	7.3	16.4	20.0	6.9	32.5	12.4	30.3	4.4	9.2
<b>2001</b>													
October	15.7	1.9	6.0	128.6	2.4	6.1	8.4	2.7	11.2	5.2	11.9	1.6	3.2
November	15.9	1.7	5.6	117.2	2.6	5.6	7.3	2.3	9.6	4.6	11.2	1.6	3.0
December	12.8	1.2	5.6	100.6	2.5	4.7	6.2	2.2	8.3	3.6	9.8	1.7	2.6
December quarter	44.4	4.9	17.2	346.3	7.4	16.5	21.9	7.2	29.1	13.4	32.9	4.9	8.8
<b>ROOM OCCUPANCY RATES (%)</b>													
<b>2000</b>													
December quarter	53.9	48.5	39.7	64.7	59.9	48.7	43.0	52.9	54.3	34.9	43.4	32.6	59.7
<b>2001</b>													
October	53.8	64.8	35.5	72.4	58.3	54.1	54.1	67.7	56.0	43.3	49.9	34.4	69.2
November	56.2	59.8	34.5	68.2	65.4	51.4	48.8	60.0	49.2	39.6	48.4	36.2	65.8
December	43.6	41.1	33.5	56.6	60.5	41.4	39.9	56.6	41.5	30.5	41.0	36.6	55.7
December quarter	51.1	55.2	34.5	65.7	61.4	48.9	47.6	61.5	48.9	37.8	46.4	35.7	63.5
<b>GUEST NIGHTS ('000)</b>													
<b>2000</b>													
December quarter	74.6	7.2	40.5	558.5	13.8	29.7	33.1	13.1	53.7	19.9	44.3	7.5	17.3
<b>2001</b>													
October	26.0	3.1	12.6	208.6	4.5	11.7	13.9	5.2	19.9	8.9	18.0	2.4	6.2
November	25.3	2.7	12.4	182.0	4.9	10.5	11.8	3.8	16.0	6.9	14.1	2.3	5.3
December	22.3	2.1	12.8	175.8	5.6	9.8	11.1	4.4	14.8	6.1	14.8	3.1	5.1
December quarter	73.6	7.9	37.8	566.4	15.0	32.0	36.8	13.4	50.8	21.9	47.0	7.8	16.6
<b>GUEST ARRIVALS ('000)</b>													
<b>2000</b>													
December quarter	50.1	5.0	24.8	251.4	7.4	20.4	20.0	8.9	36.4	12.7	29.4	4.8	9.1
<b>2001</b>													
October	16.9	2.0	7.4	84.9	2.0	7.7	9.8	3.4	13.3	6.4	11.6	1.7	3.3
November	17.2	1.8	7.9	80.9	2.1	7.1	8.0	2.5	10.5	5.0	8.6	1.6	2.9
December	14.7	1.5	7.8	74.9	2.4	6.5	6.7	2.9	10.0	4.7	10.0	1.7	2.6
December quarter	48.7	5.4	23.0	240.7	6.5	21.4	24.5	8.8	33.9	16.1	30.3	5.0	8.8
<b>TAKINGS FROM ACCOMMODATION (\$'000)</b>													
<b>2000</b>													
December quarter	3 143	240	1 596	39 157	745	1 759	1 362	583	2 210	976	2 017	289	782
<b>2001</b>													
October	1 165	120	541	15 121	254	586	565	237	823	433	833	101	303
November	1 187	110	505	13 250	266	555	511	211	684	364	766	96	276
December	969	80	558	11 066	262	468	435	208	564	296	695	101	252
December quarter	3 322	310	1 604	39 436	781	1 610	1 511	655	2 071	1 093	2 294	299	830

Period	South East	Goldfields	Midwest	Gascoyne	Pilbara	Kimberley	Perth	Peel	South West	Great Southern	Wheatbelt
<b>ESTABLISHMENTS, CAPACITY AND EMPLOYMENT (number)</b>											
<b>December quarter 2000</b>											
Establishments	10	25	25	11	19	28	104	8	58	20	24
Guest rooms	279	1 063	869	503	1 425	1 522	9 385	459	2 374	762	684
Bed spaces	824	2 775	2 297	1 356	3 010	4 333	25 717	1 544	7 438	2 268	1 650
Persons employed	127	441	365	156	448	779	5 910	199	1 423	311	284
<b>December quarter 2001</b>											
Establishments	10	23	25	10	18	28	100	7	58	20	22
Guest rooms	298	1 039	868	480	1 364	1 553	9 341	344	2 461	764	616
Bed spaces	903	2 763	2 378	1 278	2 854	4 500	25 723	1 243	7 444	2 264	1 509
Persons employed	135	422	350	156	452	542	5 682	166	1 290	311	230
<b>ROOM NIGHTS OCCUPIED ('000)</b>											
<b>2000</b>											
December quarter	15.8	42.2	31.4	18.8	59.7	59.7	607.0	16.3	110.8	31.4	23.1
<b>2001</b>											
October	5.7	17.8	13.4	7.3	22.0	21.5	189.2	4.9	40.2	12.4	7.4
November	4.8	14.9	12.3	6.1	21.0	16.7	183.4	4.6	38.5	9.8	6.9
December	4.6	11.6	10.0	5.2	17.5	13.3	181.8	5.6	40.9	10.3	5.8
December quarter	15.2	44.4	35.7	18.6	60.5	51.5	554.3	15.1	119.7	32.5	20.1
<b>ROOM OCCUPANCY RATES (%)</b>											
<b>2000</b>											
December quarter	61.5	44.0	39.2	40.5	45.5	42.6	70.3	38.7	50.7	44.8	36.9
<b>2001</b>											
October	62.2	55.3	49.9	49.4	51.9	44.6	65.3	45.7	52.7	52.2	38.9
November	53.8	48.0	47.2	42.5	51.4	35.9	65.4	44.4	52.2	42.9	37.2
December	50.1	36.1	37.0	34.8	41.5	27.5	62.8	52.7	53.7	43.3	30.3
December quarter	55.4	46.4	44.7	42.2	48.2	36.0	64.5	47.6	52.9	46.2	35.5
<b>GUEST NIGHTS ('000)</b>											
<b>2000</b>											
December quarter	25.6	60.0	53.1	31.3	71.2	104.6	1 014.3	38.5	238.1	53.6	33.5
<b>2001</b>											
October	10.3	25.4	22.8	12.9	28.8	39.5	317.2	11.5	85.3	20.3	11.2
November	7.6	19.7	21.0	10.0	26.4	29.1	299.0	11.7	77.6	15.8	9.6
December	8.7	17.2	17.6	9.2	23.2	26.0	331.7	13.8	98.2	19.0	8.4
December quarter	26.6	62.3	61.4	32.1	78.4	94.6	947.9	37.0	261.1	55.2	29.3
<b>GUEST ARRIVALS ('000)</b>											
<b>2000</b>											
December quarter	11.8	33.2	30.2	12.5	29.7	30.6	385.3	17.7	118.4	32.8	22.7
<b>2001</b>											
October	4.9	12.6	13.4	5.6	12.8	12.8	122.6	5.3	41.6	11.9	8.4
November	3.4	9.8	10.9	4.4	12.2	8.9	117.7	6.8	38.5	9.8	6.4
December	3.5	10.5	9.6	3.7	10.5	7.6	128.1	8.0	44.0	11.7	5.4
December quarter	11.7	32.9	33.9	13.8	35.4	29.3	368.5	20.1	124.0	33.4	20.2
<b>TAKINGS FROM ACCOMMODATION (\$'000)</b>											
<b>2000</b>											
December quarter	1 123	3 940	2 377	1 413	4 381	6 374	69 528	1 530	11 185	2 797	1 491
<b>2001</b>											
October	405	1 715	1 050	607	1 895	2 292	21 037	484	3 910	1 110	547
November	325	1 332	962	532	1 772	1 588	20 196	485	3 614	860	465
December	333	1 053	751	419	1 392	1 165	20 249	677	4 583	974	373
December quarter	1 063	4 100	2 764	1 558	5 059	5 046	61 483	1 647	12 107	2 944	1 385

Period	Greater Hobart	Southern	East Coast	Northern	Greater Launceston	North West	West Coast
ESTABLISHMENTS, CAPACITY AND EMPLOYMENT (number)							
<b>December quarter 2000</b>							
Establishments	38	14	4	2	30	30	10
Guest rooms	2 065	461	n.p.	n.p.	1 352	951	415
Bed spaces	5 844	1 593	n.p.	n.p.	4 416	2 719	1 245
Persons employed	1 727	258	n.p.	n.p.	1 178	524	197
<b>December quarter 2001</b>							
Establishments	37	14	4	2	30	31	10
Guest rooms	2 154	461	n.p.	n.p.	1 321	983	413
Bed spaces	5 962	1 600	n.p.	n.p.	4 239	2 876	1 239
Persons employed	1 761	253	n.p.	n.p.	1 044	520	216
ROOM NIGHTS OCCUPIED ('000)							
<b>2000</b>							
December quarter	126.9	18.8	n.p.	n.p.	65.9	35.3	15.7
<b>2001</b>							
October	45.5	5.9	n.p.	n.p.	20.8	11.5	5.4
November	45.2	6.3	n.p.	n.p.	22.3	12.5	5.7
December	38.1	6.2	n.p.	n.p.	23.1	11.4	4.6
December quarter	128.8	18.5	n.p.	n.p.	66.2	35.4	15.8
ROOM OCCUPANCY RATES (%)							
<b>2000</b>							
December quarter	66.8	44.3	n.p.	n.p.	53.0	40.3	41.0
<b>2001</b>							
October	68.2	41.6	n.p.	n.p.	50.8	37.6	42.5
November	70.0	45.7	n.p.	n.p.	56.3	42.4	46.4
December	57.0	43.6	n.p.	n.p.	56.3	37.5	36.2
December quarter	65.0	43.6	n.p.	n.p.	54.5	39.1	41.6
GUEST NIGHTS ('000)							
<b>2000</b>							
December quarter	222.1	39.1	n.p.	n.p.	125.2	60.1	27.8
<b>2001</b>							
October	74.7	11.6	n.p.	n.p.	38.4	19.4	10.0
November	76.4	12.2	n.p.	n.p.	38.2	20.3	10.0
December	73.4	13.3	n.p.	n.p.	43.9	21.3	9.3
December quarter	224.4	37.1	n.p.	n.p.	120.5	61.1	29.2
GUEST ARRIVALS ('000)							
<b>2000</b>							
December quarter	97.4	27.8	n.p.	n.p.	72.2	35.4	20.5
<b>2001</b>							
October	27.6	8.8	n.p.	n.p.	20.4	12.6	8.5
November	32.3	9.5	n.p.	n.p.	22.6	12.8	8.8
December	30.3	9.3	n.p.	n.p.	23.9	12.2	8.2
December quarter	90.2	27.5	n.p.	n.p.	66.9	37.7	25.5
TAKINGS FROM ACCOMMODATION (\$'000)							
<b>2000</b>							
December quarter	13 502	1 863	n.p.	n.p.	6 046	3 333	1 169
<b>2001</b>							
October	4 509	575	n.p.	n.p.	1 856	1 102	441
November	4 849	635	n.p.	n.p.	2 068	1 198	462
December	4 175	720	n.p.	n.p.	2 106	1 232	416
December quarter	13 533	1 930	n.p.	n.p.	6 031	3 533	1 319



Period	Darwin	Kakadu	Arnhem	Katherine	Tablelands	Petermann	Alice Springs	MacDonnell	Daly	Canberra
ESTABLISHMENTS, CAPACITY AND EMPLOYMENT (number)										
<b>December quarter 2000</b>										
Establishments	34	3	3	10	7	7	22	2	1	60
Guest rooms	2 612	n.p.	n.p.	527	241	n.p.	1 619	n.p.	n.p.	5 020
Bed spaces	7 817	n.p.	n.p.	1 486	694	n.p.	4 947	n.p.	n.p.	15 195
Persons employed	1 427	n.p.	n.p.	171	50	n.p.	731	n.p.	n.p.	2 169
<b>December quarter 2001</b>										
Establishments	34	4	3	10	6	7	22	2	1	62
Guest rooms	2 602	n.p.	83	547	n.p.	n.p.	1 614	n.p.	n.p.	5 270
Bed spaces	7 648	n.p.	280	1 541	n.p.	n.p.	4 854	n.p.	n.p.	15 592
Persons employed	1 277	n.p.	51	184	n.p.	n.p.	732	n.p.	n.p.	2 485
ROOM NIGHTS OCCUPIED ('000)										
<b>2000</b>										
December quarter	136.7	n.p.	n.p.	18.5	6.0	n.p.	85.1	n.p.	n.p.	271.9
<b>2001</b>										
October	53.7	n.p.	1.1	8.0	n.p.	n.p.	30.0	n.p.	n.p.	105.0
November	46.1	n.p.	0.8	6.7	n.p.	n.p.	27.3	n.p.	n.p.	94.2
December	34.2	n.p.	0.5	4.6	n.p.	n.p.	18.5	n.p.	n.p.	78.9
December quarter	133.9	n.p.	2.4	19.3	n.p.	n.p.	75.9	n.p.	n.p.	278.1
ROOM OCCUPANCY RATES (%)										
<b>2000</b>										
December quarter	56.9	n.p.	n.p.	38.1	27.3	n.p.	57.1	n.p.	n.p.	59.0
<b>2001</b>										
October	66.5	n.p.	43.1	47.0	n.p.	n.p.	60.0	n.p.	n.p.	64.3
November	59.1	n.p.	31.4	40.6	n.p.	n.p.	56.5	n.p.	n.p.	59.6
December	42.4	n.p.	19.7	27.2	n.p.	n.p.	37.0	n.p.	n.p.	48.3
December quarter	56.0	n.p.	31.4	38.3	n.p.	n.p.	51.1	n.p.	n.p.	57.4
GUEST NIGHTS ('000)										
<b>2000</b>										
December quarter	218.4	n.p.	n.p.	33.1	10.3	n.p.	148.1	n.p.	n.p.	459.2
<b>2001</b>										
October	84.9	n.p.	1.8	14.4	n.p.	n.p.	50.7	n.p.	n.p.	182.6
November	71.7	n.p.	1.2	11.8	n.p.	n.p.	44.8	n.p.	n.p.	155.3
December	60.6	n.p.	0.8	9.7	n.p.	n.p.	32.4	n.p.	n.p.	139.8
December quarter	217.2	n.p.	3.9	36.0	n.p.	n.p.	127.9	n.p.	n.p.	477.7
GUEST ARRIVALS ('000)										
<b>2000</b>										
December quarter	90.5	n.p.	n.p.	24.4	9.1	n.p.	71.3	n.p.	n.p.	194.6
<b>2001</b>										
October	39.4	n.p.	0.8	10.3	n.p.	n.p.	26.2	n.p.	n.p.	75.1
November	34.4	n.p.	0.6	7.6	n.p.	n.p.	25.7	n.p.	n.p.	64.0
December	27.1	n.p.	0.4	6.9	n.p.	n.p.	16.3	n.p.	n.p.	58.1
December quarter	100.9	n.p.	1.7	24.8	n.p.	n.p.	68.1	n.p.	n.p.	197.2
TAKINGS FROM ACCOMMODATION (\$'000)										
<b>2000</b>										
December quarter	12 857	n.p.	n.p.	1 349	430	n.p.	7 072	n.p.	n.p.	30 115
<b>2001</b>										
October	5 302	n.p.	178	577	n.p.	n.p.	2 497	n.p.	n.p.	11 494
November	4 482	n.p.	113	451	n.p.	n.p.	2 224	n.p.	n.p.	10 034
December	3 342	n.p.	69	328	n.p.	n.p.	1 480	n.p.	n.p.	8 257
December quarter	13 127	n.p.	360	1 356	n.p.	n.p.	6 201	n.p.	n.p.	29 785

## EXPLANATORY NOTES

---

### INTRODUCTION

- 1** This publication contains data from the ABS quarterly Survey of Tourist Accommodation (STA). The STA is a mailout collection that completely enumerates all in-scope accommodation establishments.
- 2** From the March quarter 1998, the scope and collection strategy for the STA was changed to include only significant accommodation establishments (these are defined below).

### SCOPE

- 3** On a quarterly basis, the STA includes hotels, resorts, motels, guest houses and serviced apartments with 15 or more rooms or units.
- 4** Every third year beginning with 2000, the STA expands to also include:
  - holiday flats, units and houses of letting entities with 15 or more rooms or units;
  - caravan parks with 40 or more powered sites;
  - visitor hostels with 25 or more bed spaces.
- 5** The short-term non-residential accommodation which is in scope of the STA is accommodation which is not leased, and which is provided to guests who would generally stay for periods of less than two months.
- 6** Some establishments also provide long-term residential accommodation. For hotels, motels, guest houses and serviced apartments, the amount of such activity is considered to be insignificant and is included in the data presented in this publication.

### DEFINITIONS OF ACCOMMODATION ESTABLISHMENTS

- 7** The STA includes the following categories of establishments which provide predominantly short-term non-residential accommodation to the general public:
  - hotels and resorts with facilities - establishments with 15 or more rooms which are licensed to operate a public bar and which provide accommodation on a room/suite basis, with a bath/shower and toilet in most guest rooms, but which do not have full cooking facilities (i.e. hot plates and oven/microwave) in most guest rooms;
  - motels, private hotels and guest houses with facilities - establishments with 15 or more rooms which are not licensed to operate a public bar, and which provide accommodation on a room/suite basis, with a bath/shower and toilet in most guest rooms, but which do not have full cooking facilities (i.e. hot plates and oven/microwave) in most guest rooms;
  - serviced apartments - establishments with 15 or more units which mostly comprise self-contained units at the same location, and which are available on a unit/apartment basis to the general public for a minimum of one night; the units should have full cooking facilities (i.e. hot plates and oven/microwave), refrigerator and bath/shower and toilet facilities; all bed linen and towels should be provided, and daily servicing (i.e. cleaning and bed making) must be available through the on-site management, although this service need not necessarily be used.

## EXPLANATORY NOTES *continued*

---

CLASSIFICATION CHANGES	<p><b>8</b> As a result of the separate classification of serviced apartments from the March quarter 1998, there have been several changes to definitions of accommodation units. Some units, which were formerly in categories such as hotels, motels or holiday flats, units and houses are now classified as serviced apartments. A small number of establishments which were previously classified as motels have been reclassified as holiday flats, units and houses and are therefore no longer in scope of the quarterly STA, except as described in paragraph 4.</p>
COVERAGE	<p><b>9</b> Coverage is comprehensive and from the September quarter 1999, is obtained from the Australian Automobile Association accommodation guide, supplied as an electronic file, which is updated twice yearly. This is supplemented by notification of new tourism developments and their likely opening dates in selected guides, major tourism journals and periodicals and newspapers. Periodic comparison with lists of accommodation establishments provided by the various Tourism Commissions and Industry Associations is also undertaken.</p>
DATA QUALITY	<p><b>10</b> The survey does not have a sample component and the data are not subject to sampling variability. However, other inaccuracies collectively referred to as non-sampling error may affect the data. These non-sampling errors may arise from a number of sources, including:</p> <ul style="list-style-type: none"><li>■ errors in the reporting of data by respondents;</li><li>■ errors in the process of capturing data;</li><li>■ estimation for missing data; and</li><li>■ definition and classification errors.</li></ul> <p>Every effort has been made to reduce non-sampling error to a minimum by careful design and testing of questionnaires, and efficient operating procedures and systems used to compile statistics.</p> <p><b>11</b> The December quarter 2001 response rates were:</p> <ul style="list-style-type: none"><li>■ 95% licensed hotels</li><li>■ 94% motels and guest houses</li><li>■ 95% serviced apartments</li></ul>
TAKINGS FROM ACCOMMODATION	<p><b>12</b> From 1 July 2000, takings from accommodation include gross revenue from the provision of accommodation, including GST. Takings from meals are excluded. Where businesses are unable to provide the data inclusive of GST, it is automatically adjusted by the ABS prior to aggregation and release in output.</p>

## EXPLANATORY NOTES *continued*

---

### REGIONAL DATA

**13** Survey results are aggregated to Tourism Regions as defined by relevant State and Territory Tourist Commissions or equivalent organisations. Tourism Regions are reviewed annually and are subject to boundary and name changes. Where changes have occurred care should be taken when making comparisons with previously published data at this level.

Details of the composition of Tourism Regions and major changes to Tourism Regions can be found in *Tourist Accommodation, Small Area Data* Standard Data Service products for each State/Territory (Cat. no. 8635.n.40.001) (issued quarterly). Outline maps of Tourism Regions are also provided in these Small Area Data products.

### ANNUAL CAPACITY DATA

**14** ABS releases counts of accommodation establishments and their capacity as at the end of December each year in respect of the pre-1998 scope of the survey (but recognising serviced apartments separately) as follows:

- hotels, motels and guest houses and serviced apartments with facilities and having five or more rooms;
- holiday flats, units and houses (other than those included with serviced apartments) which are operated by owners, managers or real estate agents who have sole letting rights to at least five flats, units or houses for short term letting;
- all caravan parks regardless of size; and
- all visitor hostels regardless of size.

**15** As a result of classification changes applied from March quarter 1998 onward, data will not be comparable with that previously published for particular accommodation types.

**16** These counts are published annually in a quarterly issue of *Tourism Indicators, Australia* (Cat. no. 8634.0).

### STATISTICS AVAILABLE ON REQUEST

**17** The ABS makes tourist accommodation data available on request, including statistics for past quarters, for specific areas and specific data items. For example, detailed employment statistics showing the number of full-time, part-time or casual employees may be available. Normally such data is made available on a fee for service basis.

### RELATED PUBLICATIONS

**18** Other ABS publications and products which may be of interest include:  
*Directory of Tourism Statistics, 2000* (Cat. no. 1130.0) (irregular)  
*Overseas Arrivals and Departures, Australia* (Cat. no. 3401.0) (issued monthly)  
*Tourism Indicators, Australia* (Cat. no. 8634.0) (issued quarterly)  
*Tourist Accommodation, Small Area Data* Standard Data Service (SDS) products for each State/Territory (except the ACT) (Cat. no. 8635.n.40.001) (issued quarterly).

**19** Current publications produced by the ABS are listed in the *Catalogue of Publications and Products* (Cat. no. 1101.0). The ABS also issues the *Release Advice* (Cat. no. 1105.0) on Tuesdays and Fridays which lists publications to be released in the next few days. Both are available from any ABS office or the ABS web site.

### EFFECTS OF ROUNDING

**20** Where figures have been rounded, discrepancies may occur between totals and the sum of the component items.

## GLOSSARY

---

<b>Average length of stay</b>	Average length of stay is expressed in numbers of days and calculated by dividing <i>Guest nights</i> by <i>Guest arrivals</i> .
<b>Bed spaces</b>	Three-quarter beds are counted as one bed space; double beds as two bed spaces. Cots are excluded.
<b>Capacity</b>	Capacity in terms of <i>Guest rooms/units</i> or <i>Bed spaces</i> is the maximum number available to accommodate paying guests during the survey period. Capacity closed temporarily for seasonal reasons is included.
<b>Establishments</b>	The number of hotels, motels and guest houses and serviced apartments within the scope of the survey which operated for any part of the survey period, or which closed temporarily for the quarter for seasonal reasons.
<b>Guest arrivals</b>	The total number of paying guests counted only on the first night they stayed at the accommodation establishment during the survey period.
<b>Guest rooms</b>	The maximum number of rooms available at each establishment during the survey period for accommodating short-term paying guests. Units and apartments within serviced apartments are treated as rooms in these survey results.
<b>Occupancy</b>	Occupancy in terms of <i>Room nights</i> refers to the total number of nights each guest room or unit was occupied during the survey period.  Occupancy in terms of <i>Guest nights</i> refers to the total number of paying guests counted on each night they stayed at the accommodation establishment during the survey period.
<b>Occupancy rates</b>	<i>Occupancy rates</i> represent occupancy expressed as a percentage of total capacity available during the survey period, e.g. for the period $\text{Room occupancy rate (\%)} = \frac{\text{Room nights occupied}}{(\text{Guest rooms}) \times (\text{No. of days in the period})} \times 100$ providing that, for establishments closing (other than for seasonal reasons) or opening during the survey period, the denominator of the above expression includes only operating periods.
<b>Persons employed</b>	The total number of persons working at each accommodation establishment at the end of the survey period (including working proprietors and those working on other than accommodation activities).
<b>Room nights available</b>	The number of guest rooms/units available multiplied by the number of days for which they were available during the survey period. For establishments closing (other than for seasonal reasons) or opening during this period, operating periods only are included.

**Star grading** The grading of hotels, motels and guest houses with facilities and serviced apartments based on the classification system used by members of the Australian Automobile Association (AAA). The gradings are allocated according to a points system based on the amenities and facilities available to guests. Details of the grading scheme are contained in the RACV-RAASA members' publication *Accommodation Australia*, or the individual tour guides produced by members of the AAA. For the purpose of classifying establishments to a star grading in this publication, 'half' star gradings are ignored (e.g. a two and a half star grading has been shown as two star).

From the September quarter 1999, some (very few) large establishments not star graded by the AAA have been allocated a star grade by the ABS for Survey of Tourist Accommodation statistical tabulation purposes.

**Takings from accommodation** Since 1 July 2000, takings from accommodation include gross revenue from the provision of accommodation, including GST. Takings from meals are excluded. In cases where takings from accommodation data cannot be provided inclusive of GST the amount of GST payable is estimated and the data revised accordingly.

Prior to 1 July 2000, takings from accommodation for some jurisdictions included bed taxes. From 1 July bed taxes were abolished being replaced by GST. Takings from accommodation for each month generally represent the takings received during that month. Where payments are received in advance of, or after, the provision of accommodation to guests, the monthly figure for takings from accommodation may not necessarily bear a direct relationship to the number of guests accommodated during the month.



## FOR MORE INFORMATION...

- INTERNET* **www.abs.gov.au** the ABS web site is the best place to start for access to summary data from our latest publications, information about the ABS, advice about upcoming releases, our catalogue, and Australia Now—a statistical profile.
- LIBRARY* A range of ABS publications is available from public and tertiary libraries Australia-wide. Contact your nearest library to determine whether it has the ABS statistics you require, or visit our web site for a list of libraries.
- CPI INFOLINE* For current and historical Consumer Price Index data, call 1902 981 074 (call cost 77c per minute).
- DIAL-A-STATISTIC* For the latest figures for National Accounts, Balance of Payments, Labour Force, Average Weekly Earnings, Estimated Resident Population and the Consumer Price Index call 1900 986 400 (call cost 77c per minute).

## INFORMATION SERVICE

Data which have been published and can be provided within five minutes are free of charge. Our information consultants can also help you to access the full range of ABS information—ABS user-pays services can be tailored to your needs, time frame and budget. Publications may be purchased. Specialists are on hand to help you with analytical or methodological advice.

- PHONE* **1300 135 070**
- EMAIL* **client.services@abs.gov.au**
- FAX* 1300 135 211
- POST* Client Services, ABS, GPO Box 796, Sydney 1041

## WHY NOT SUBSCRIBE?

ABS subscription services provide regular, convenient and prompt deliveries of ABS publications and products as they are released. Email delivery of monthly and quarterly publications is available.

- PHONE* 1300 366 323
- EMAIL* subscriptions@abs.gov.au
- FAX* 03 9615 7848
- POST* Subscription Services, ABS, GPO Box 2796Y, Melbourne 3001



2863500012014  
ISSN 1031-0770

RRP \$22.00